

Recombinant Glutamine Fructose-6-Phosphate Transaminase 1 (GFPT1) Instruction Manual

SIPD478Hu01

Homo sapiens (Human)

Source	Prokaryotic expression
Host	E.coli
Endotoxin Level	<1.0EU per 1 μ g (determined by the LAL method)
Subcellular Location	Cytoplasm, Extracellular matrix
Predicted Molecular Mass	38.1kDa
Accurate Molecular Mass	38kDa(Analysis of differences refer to the manual)
Residues & Tags	Cys2~Gly305 with N-terminal His Tag
Buffer Formulation	PBS, pH7.4, containing 0.01% SKL, 5% Trehalose.
Traits	Freeze-dried powder
Purity	> 90%
Isoelectric Point	6.2
Applications	Positive Control; Immunogen; SDS-PAGE; WB.

SEQUENCE

```
CGIFAYLNY HVPRTREIL ETLIKGLQRL EYRGYDSAGV GFDGGNDKDW  
EANACKIQLI KKKGKVKALD EEVHKQQDMD LDIEFDVHLG IAHTRWATHG  
EPSPVNSHPQ RSDKNNEFIV IHNGIITNYK DLKKFLESKG YDFESETDTE  
TIAKLVKMY DNRESQDTSF TTLVERVIQQ LEGAFALVFK SVHFPGQAVG  
TRRGSPLLIG VRSEHKLSTD HIPILYRTAR TQIGSKFTRW GSQGERGKDK  
KGSCNLSRVD STTCLFPVEE KAVEYYFASD ASAVIEHTNR VIFLEDDDDVA  
AVVDG
```

USAGE

Reconstitute in 10mM PBS (pH7.4) to a concentration of 0.1-1.0 mg/mL. Do not vortex.

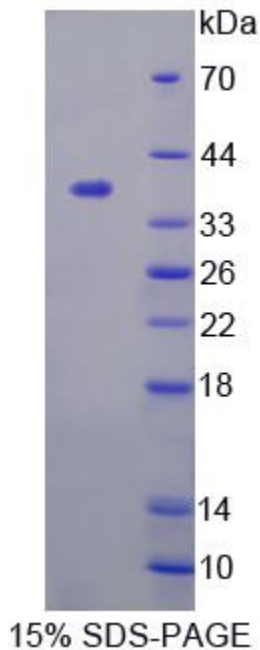
STORAGE

Avoid repeated freeze/thaw cycles. Store at 2-8°C for one month. Aliquot and store at -80°C for 12 months.

STABILITY

The thermal stability is described by the loss rate. The loss rate was determined by accelerated thermal degradation test, that is, incubate the protein at 37°C for 48h, and no obvious degradation and precipitation were observed. The loss rate is less than 5% within the expiration date under appropriate storage condition.

Image



15% SDS-PAGE
SDS-PAGE Image

[IMPORTANT NOTE]

The kit is designed for research use only, we will not be responsible for any issue if the kit was used in clinical diagnostic or any other procedures.