

# Recombinant Cysteine Conjugate Beta Lyase, Cytoplasmic (CCbL1) Instruction Manual

**SIPD524Hu01**

**Homo sapiens (Human)**

<b>Source</b>	Prokaryotic expression
<b>Host</b>	E.coli
<b>Endotoxin Level</b>	<1.0EU per 1µg (determined by the LAL method)
<b>Subcellular Location</b>	Cytoplasm
<b>Predicted Molecular Mass</b>	51.6kDa
<b>Accurate Molecular Mass</b>	52kDa(Analysis of differences refer to the manual)
<b>Residues &amp; Tags</b>	Met1~Leu422 with N-terminal His Tag
<b>Buffer Formulation</b>	20mM Tris, 150mM NaCl, pH8.0, containing 1mM EDTA, 1mM DTT, 0.01% SKL, 5% Trehalose and Proclin300.
<b>Traits</b>	Freeze-dried powder
<b>Purity</b>	> 97%
<b>Isoelectric Point</b>	6.0
<b>Applications</b>	Positive Control; Immunogen; SDS-PAGE; WB.

## SEQUENCE

```
MAKQLQARRL DGIDYNPWVE FVKLASEHDV VNLGQGFPDF PPPDFAVEAF  
QHAVSGDFML NQYTKTFGYP PLTKILASFF GELGQEIDP LRNVLVTVGG  
YGALFTAFQA LVDEGDEVII IEPFFDCYEP MTMMAGGRPV FVSLKPGPIQ  
NGELGSSSNW QLDPMELAGK FTSRTKALVL NTPNNPLGKV FSREELELVA  
SLCQQHDVVC ITDEVYQWMV YDGHQHISIA SLPGMWERTL TIGSAGKTFS  
ATGWKVGWVL GPDHIMKHLR TVHQNSVFHC PTQSQAABAE SFEREQLLFR  
QPSSYFVQFP QAMQRCRDHM IRSLQSVGLK PIIPQGSYFL ITDISDFKRR  
MPDLPGAVDE PYDRRFVKWM IKNKGLVAIP VSIFYSVPHQ KHFDHYIRFC  
FVKDEATLQA MDEKLRKWKV EL
```

## USAGE

Reconstitute in 20mM Tris, 150mM NaCl (pH8.0) to a concentration of 0.1-1.0 mg/mL.  
Do not vortex.

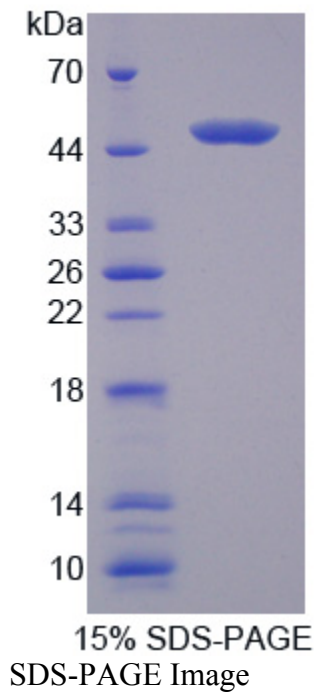
## STORAGE

Avoid repeated freeze/thaw cycles. Store at 2-8°C for one month. Aliquot and store at -80°C for 12 months.

## STABILITY

The thermal stability is described by the loss rate. The loss rate was determined by accelerated thermal degradation test, that is, incubate the protein at 37°C for 48h, and no obvious degradation and precipitation were observed. The loss rate is less than 5% within the expiration date under appropriate storage condition.

## Image



## **[IMPORTANT NOTE]**

The kit is designed for research use only, we will not be responsible for any issue if the kit was used in clinical diagnostic or any other procedures.

