

Recombinant Phosphofructokinase, Muscle (PFKM) Instruction Manual

SIPD766Ra01

Rattus norvegicus (Rat)

Source	Prokaryotic expression
Host	E.coli
Endotoxin Level	<1.0EU per 1µg (determined by the LAL method)
Subcellular Location	Cytoplasm
Predicted Molecular Mass	46.3kDa
Accurate Molecular Mass	46kDa(Analysis of differences refer to the manual)
Residues & Tags	Thr2~His390 with N-terminal His Tag
Buffer Formulation	20mM Tris, 150mM NaCl, pH8.0, containing 0.01% SKL, 5% Trehalose.
Traits	Freeze-dried powder
Purity	> 97%
Isoelectric Point	6.1
Applications	Positive Control; Immunogen; SDS-PAGE; WB.

SEQUENCE

```
THEEHHEAK TLGIGKAIIV LTSGGDAQGM NATVRAVVRV GIFTGLRVFF  
VHEGYQGLVD GGEHIREATW ESVSMMLQLG GTVIGSARCK DFREREGRLR  
AAHNLVKRGI TNLCVIGGDG SLTGADTFRS EWSDLLNDLQ KDGKITAEER  
TKSSYLNIVF LVGSIDNDFC GTDMTIGTDS ALHRIVEIVD AITTTAQSHQ  
RTFVLEVMGR HCGYLALVTS LSCGADWVFI PECPPDDWE EHLCRRLSET  
RTRGSRLNII IVAEGAIDKN GKPITSEDIK NLVVKRLGYD TRVTVLGHVQ  
RGGTPSAFDR ILGSRMGVEA VMALLEGTPD TPACVVSLSG NTAVRLPLME  
CVQVTKDVTK AMDEKRFDEA IKLRGRSFMN NWEVYKLLAH
```

USAGE

Reconstitute in 20mM Tris, 150mM NaCl (pH8.0) to a concentration of 0.1-1.0 mg/mL.
Do not vortex.

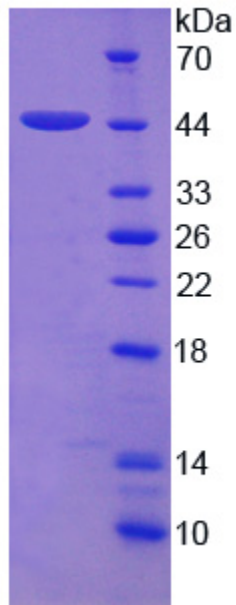
STORAGE

Avoid repeated freeze/thaw cycles. Store at 2-8°C for one month. Aliquot and store at -80°C for 12 months.

STABILITY

The thermal stability is described by the loss rate. The loss rate was determined by accelerated thermal degradation test, that is, incubate the protein at 37°C for 48h, and no obvious degradation and precipitation were observed. The loss rate is less than 5% within the expiration date under appropriate storage condition.

Image



15% SDS-PAGE
SDS-PAGE Image

[IMPORTANT NOTE]

The kit is designed for research use only, we will not be responsible for any issue if the kit was used in clinical diagnostic or any other procedures.