

Recombinant Glycogen Debranching Enzyme (AGL) Instruction Manual

SIPD934Hu01

Homo sapiens (Human)

Source	Prokaryotic expression
Host	E.coli
Endotoxin Level	<1.0EU per 1µg (determined by the LAL method)
Subcellular Location	Cytoplasm
Predicted Molecular Mass	45.5kDa
Accurate Molecular Mass	45kDa(Analysis of differences refer to the manual)
Residues & Tags	Met1167~Leu1532 with N-terminal His Tag
Buffer Formulation	20mM Tris, 150mM NaCl, pH8.0, containing 1mM EDTA, 1mM DTT, 0.01% SKL, 5% Trehalose and Proclin300.
Traits	Freeze-dried powder
Purity	> 90%
Isoelectric Point	6.0
Applications	Positive Control; Immunogen; SDS-PAGE; WB.

SEQUENCE

```
MVPN GLDILKCPVS RMYPTDDSAP LPAGTLDQPL
FEVIQEAMQK HMQGIQFRER NAGPQIDRNM KDEGFNITAG VDEETGFVYG
GNRFNCGTWM DKMGESDRAR NRGIPATPRD GSAVEIVGLS KSAVRWLEL
SKKNIFPYHE VTKVRHGKAI KVSYDEWNRK IQDNFEKLFH VSEDPSDLNE
KHPNLVHKRG IYKDSYGASS PWCYQLRPN FTIAMVVAPE LFTTEKAWKA
LEIAEKLLG PLGMKTLDPD DMVYCGIYDN ALDNDNYNLA KGFNYHQGPE
WLWPIGYFLR AKLYFSRLMG PETTAKTIVL VKNVLSRHYV HLESPWKGL
PELTNENAQY CPFSCETQAW SIATILETLY DL
```

USAGE

Reconstitute in 20mM Tris, 150mM NaCl (pH8.0) to a concentration of 0.1-1.0 mg/mL.
Do not vortex.

STORAGE

Avoid repeated freeze/thaw cycles. Store at 2-8°C for one month. Aliquot and store at -80°C for 12 months.

STABILITY

The thermal stability is described by the loss rate. The loss rate was determined by accelerated thermal degradation test, that is, incubate the protein at 37°C for 48h, and no obvious degradation and precipitation were observed. The loss rate is less than 5% within the expiration date under appropriate storage condition.

Image

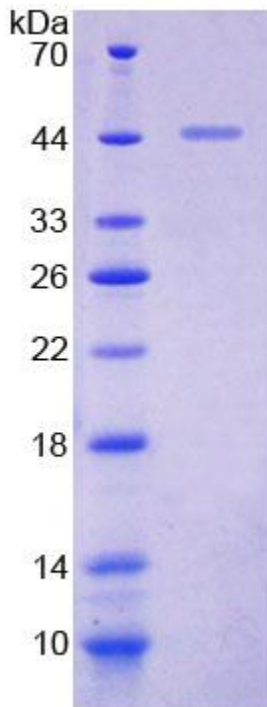


Figure. SDS-PAGE

[IMPORTANT NOTE]

The kit is designed for research use only, we will not be responsible for any issue if the kit was used in clinical diagnostic or any other procedures.

