

# Recombinant Insulin Like Protein 3 (INSL3) Instruction Manual

**SIPD984Hu01**

**Homo sapiens (Human)**

|                                 |   |
|---------------------------------|---|
| <b>Source</b>                   | Prokaryotic expression  |
| <b>Host</b>                     | E.coli  |
| <b>Endotoxin Level</b>          | <1.0EU per 1µg (determined by the LAL method)   |
| <b>Subcellular Location</b>     | Secreted  |
| <b>Predicted Molecular Mass</b> | 17.8kDa   |
| <b>Accurate Molecular Mass</b>  | 18kDa(Analysis of differences refer to the manual)  |
| <b>Residues &amp; Tags</b>      | Asp2~Cys129 with N-terminal His Tag   |
| <b>Buffer Formulation</b>       | 20mM Tris, 150mM NaCl, pH8.0, containing 1mM EDTA, 1mM DTT, 0.01% SKL, 5% Trehalose and Proclin300. |
| <b>Traits</b>                   | Freeze-dried powder   |
| <b>Purity</b>                   | > 95%   |
| <b>Isoelectric Point</b>        | 9.5   |
| <b>Applications</b>             | Positive Control; Immunogen; SDS-PAGE; WB.  |

## SEQUENCE

```
DPRLPAWAL VLLGPALVFA LGPAPTPEMR EKLCGHHFVR ALVRVCGGPR  
WSTEARRPAT GGDRELLQWL ERRHLLHGLV ADSNLTGPG LQPLPQTSHH  
HRHHRAAATN PARYCCLSGC TQQDLLTLC
```

## USAGE

Reconstitute in 20mM Tris, 150mM NaCl (pH8.0) to a concentration of 0.1-1.0 mg/mL.  
Do not vortex.

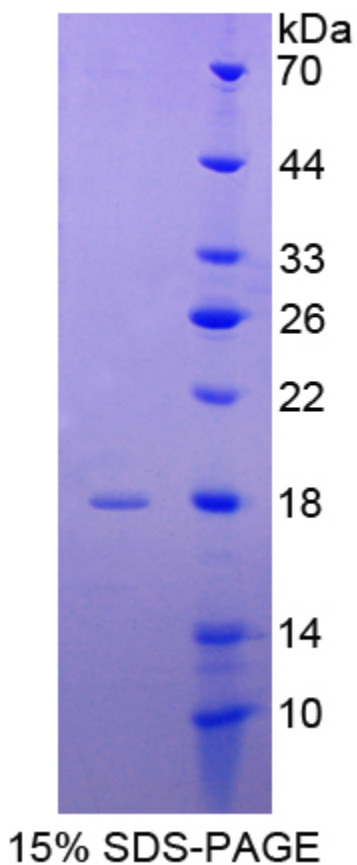
## STORAGE

Avoid repeated freeze/thaw cycles. Store at 2-8°C for one month. Aliquot and store at -80°C for 12 months.

## STABILITY

The thermal stability is described by the loss rate. The loss rate was determined by accelerated thermal degradation test, that is, incubate the protein at 37°C for 48h, and no obvious degradation and precipitation were observed. The loss rate is less than 5% within the expiration date under appropriate storage condition.

### Image



SDS-PAGE Image

### **[IMPORTANT NOTE]**

The kit is designed for research use only, we will not be responsible for any issue if the kit was used in clinical diagnostic or any other procedures.