

Recombinant Protein Phosphatase 6, Catalytic Subunit (PPP6C) Instruction Manual

SIPE020Hu01

Homo sapiens (Human)

Source	Prokaryotic expression
Host	E.coli
Endotoxin Level	<1.0EU per 1µg (determined by the LAL method)
Subcellular Location	Cytoplasm
Predicted Molecular Mass	38.6kDa
Accurate Molecular Mass	38kDa(Analysis of differences refer to the manual)
Residues & Tags	Pro3~Leu305 with N-terminal His Tag
Buffer Formulation	20mM Tris, 150mM NaCl, pH8.0, containing 1mM EDTA, 1mM DTT, 0.01% SKL, 5% Trehalose and Proclin300.
Traits	Freeze-dried powder
Purity	> 97%
Isoelectric Point	5.4
Applications	Positive Control; Immunogen; SDS-PAGE; WB.

SEQUENCE

```
PLDLDKYV EIARLCKYLP ENDLKRLCDY VCDLLLEESN VQPVSTPVTV  
CGDIHGQFYD LCELFRITGGQ VPDTNYIFMG DFVDRGYYSL ETFTYLLALK  
AKWPDRITLL RGNHESRQIT QVYGFYDECQ TKYGNANAWR YCTKVFDMILT  
VAALIDEQIL CVHGGLSPDI KTLQDQIRTIE RNQEIPHKGA FCDLVWSDPE  
DVDTWAIAPR GAGWLFQAKV TNEFVHINNL KLICRAHQLV HEGYKFMFDE  
KLVTVWSAPN YCYRCGNIAS IMVFKDVNTR EPKLFRAVPD SERVIPPRTT  
TPYFL
```

USAGE

Reconstitute in 20mM Tris, 150mM NaCl (pH8.0) to a concentration of 0.1-1.0 mg/mL.
Do not vortex.

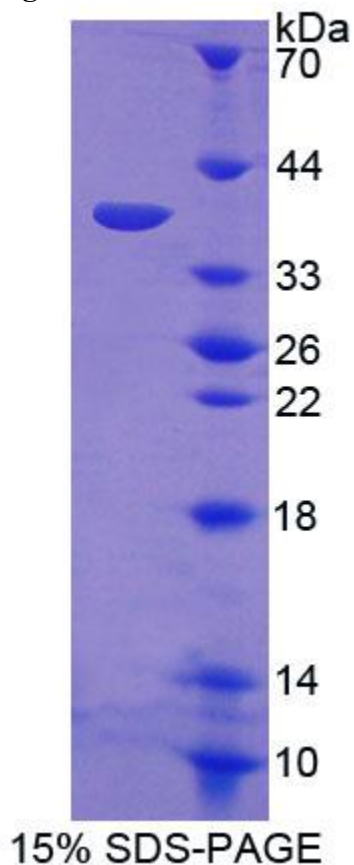
STORAGE

Avoid repeated freeze/thaw cycles. Store at 2-8°C for one month. Aliquot and store at -80°C for 12 months.

STABILITY

The thermal stability is described by the loss rate. The loss rate was determined by accelerated thermal degradation test, that is, incubate the protein at 37°C for 48h, and no obvious degradation and precipitation were observed. The loss rate is less than 5% within the expiration date under appropriate storage condition.

Image



SDS-PAGE Image

[IMPORTANT NOTE]

The kit is designed for research use only, we will not be responsible for any issue if the kit was used in clinical diagnostic or any other procedures.