

Recombinant Neurofilament, Heavy Polypeptide (NEFH) Instruction Manual

SIPE021Hu01

Homo sapiens (Human)

Source	Prokaryotic expression
Host	E.coli
Endotoxin Level	<1.0EU per 1µg (determined by the LAL method)
Subcellular Location	Cytoplasm
Predicted Molecular Mass	52.3kDa
Accurate Molecular Mass	54kDa(Analysis of differences refer to the manual)
Residues & Tags	Lys671~Lys1020 with Two N-terminal Tags, His-tag and SUMO-tag
Buffer Formulation	20mM Tris, 150mM NaCl, pH8.0, containing 1mM EDTA, 1mM DTT, 0.01% SKL, 5% Trehalose and Proclin300.
Traits	Freeze-dried powder
Purity	> 95%
Isoelectric Point	9.3
Applications	Positive Control; Immunogen; SDS-PAGE; WB.

SEQUENCE

```
KAKSPVKAEA KSPEKAKSPV KAEAKSPEKA
KSPVKEEAKS PEKAKSPVKE EAKSPEKAKS PVKEEAKTPE KAKSPVKEEA
KSPEKAKSPE KAKTLDVKSP EAKTPAKEEA RSPADKFPEK AKSPVKEEVK
SPEKAKSPLK EDAKAPEKEI PKKEEVKSPV KEEEKPQEVK VKEPPKKAEE
EKAPATPKTE EKKDSKKEEA PKKEAPKPKV EEKKEPAVEK PKESKVEAKK
EEAEDKKKVP TPEKEAPAKV EVKEDAKPKE KTEVAKKEPD DAKAKEPSKP
AEKKEAAPEK KDTKEEKAKK PEEKPKTEAK AKEDDKTLSK EPSKPKAEGA
EKSSSTDQKD SKPPEKATED
```

USAGE

Reconstitute in 20mM Tris, 150mM NaCl (pH8.0) to a concentration of 0.1-1.0 mg/mL. Do not vortex.

STORAGE

Avoid repeated freeze/thaw cycles. Store at 2-8°C for one month. Aliquot and store at -80°C for 12 months.

STABILITY

The thermal stability is described by the loss rate. The loss rate was determined by accelerated thermal degradation test, that is, incubate the protein at 37°C for 48h, and no obvious degradation and precipitation were observed. The loss rate is less than 5% within the expiration date under appropriate storage condition.

Image

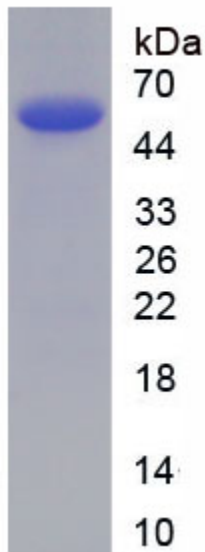


Figure. SDS-PAGE

[IMPORTANT NOTE]

The kit is designed for research use only, we will not be responsible for any issue if the kit was used in clinical diagnostic or any other procedures.