

Recombinant Interleukin 11 Receptor Alpha (IL11Ra) Instruction Manual

SIPE171Ra01

Rattus norvegicus (Rat)

Source	Prokaryotic expression
Host	E.coli
Endotoxin Level	<1.0EU per 1µg (determined by the LAL method)
Subcellular Location	Membrane
Predicted Molecular Mass	41.9KDa
Accurate Molecular Mass	42kDa(Analysis of differences refer to the manual)
Residues & Tags	Thr24~Ala371 with N-terminal His Tag
Buffer Formulation	PBS, pH7.4, containing 0.01% SKL, 1mM DTT, 5% Trehalose and Proclin300.
Traits	Freeze-dried powder
Purity	> 95%
Isoelectric Point	6.1
Applications	Positive Control; Immunogen; SDS-PAGE; WB.

SEQUENCE

```
TPCPQAW GPPGVQYGQP GRPVMLCCPG
VNAGTPVSWF RDGDSRLLQG PDSGLGHLV LAQVDSRDEG TYVCRTL DGV
FGGMVTLKLG SPPARPEVSC QAVDYENFSC TWSPGRV SGL PTRYLTSYRK
KTLPGAESQR ESPSTGPWPC PQDPLEASRC VVHGAEFWSE YRINVTEVNP
LGASTCLLDV RLQRILRPDP PQGLRVESVP GYPRRLHASW TYPASWRRQP
HFLKFR LQY RPAQH PAWST VEPIGLEELI TDAVAGLPHA VRVSARDFLD
AGTWSAWSPE AWGTPSTGPL RDEVPDGSRG HEQKLEAAQ EDS PAPPSPS
LQDPRPLDH RDPLEQVAVL A
```

USAGE

Reconstitute in 10mM PBS (pH7.4) to a concentration of 0.1-1.0 mg/mL. Do not vortex.

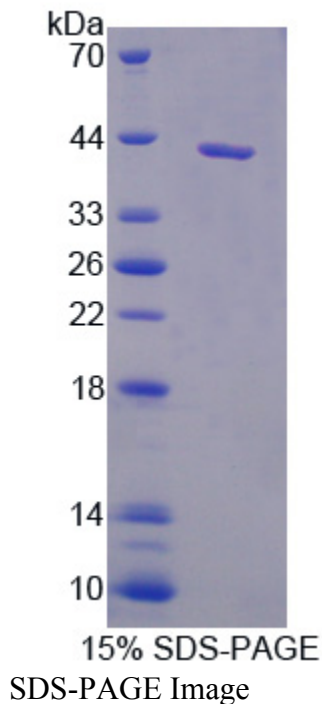
STORAGE

Avoid repeated freeze/thaw cycles. Store at 2-8°C for one month. Aliquot and store at -80°C for 12 months.

STABILITY

The thermal stability is described by the loss rate. The loss rate was determined by accelerated thermal degradation test, that is, incubate the protein at 37°C for 48h, and no obvious degradation and precipitation were observed. The loss rate is less than 5% within the expiration date under appropriate storage condition.

Image



[IMPORTANT NOTE]

The kit is designed for research use only, we will not be responsible for any issue if the kit was used in clinical diagnostic or any other procedures.