

# Recombinant Alcohol Dehydrogenase 7 (ADH7) Instruction Manual

## SIPE200Mu01

### Mus musculus (Mouse)

<b>Source</b>	Prokaryotic expression
<b>Host</b>	E.coli
<b>Endotoxin Level</b>	<1.0EU per 1µg (determined by the LAL method)
<b>Subcellular Location</b>	Cytoplasm
<b>Predicted Molecular Mass</b>	56.7kDa
<b>Accurate Molecular Mass</b>	57kDa(Analysis of differences refer to the manual)
<b>Residues &amp; Tags</b>	Gly126~Phe374 with N-terminal His and GST Tag
<b>Buffer Formulation</b>	PBS, pH7.4, containing 0.01% SKL, 5% Trehalose.
<b>Traits</b>	Freeze-dried powder
<b>Purity</b>	> 90%
<b>Isoelectric Point</b>	8.1
<b>Applications</b>	Positive Control; Immunogen; SDS-PAGE; WB.

### SEQUENCE

```
G T T R F   T C K G K P V Q H F   M N T S T F T E Y T   V L D E S S V A K V   D G A A P P E K A C   L I G C G F S T G Y   G A A V K T A K V T   P G S T C V V F G L  
G G V G L S V I M G   C K A A G A S R I I   G I D I N K D K F Q   K A L A V G A T E C   I S P K D S T K P I   S E V L S D M T G N   T I Q Y T F E V I G   R L E T M V D A L S  
S C H M N Y G T S V   V V G A P P S A K M   L T Y D P M L L F T   G R T W K G C V F G   G W K S R D D V P K   L V T E F L E K K F   D L D Q L I T H T L   P F N N I N E G F E  
L L Y S G K S I R T   V L T F
```

### USAGE

Reconstitute in 10mM PBS (pH7.4) to a concentration of 0.1-1.0 mg/mL. Do not vortex.

### STORAGE

Avoid repeated freeze/thaw cycles. Store at 2-8°C for one month. Aliquot and store at -80°C for 12 months.

## **STABILITY**

The thermal stability is described by the loss rate. The loss rate was determined by accelerated thermal degradation test, that is, incubate the protein at 37°C for 48h, and no obvious degradation and precipitation were observed. The loss rate is less than 5% within the expiration date under appropriate storage condition.

## **Image**

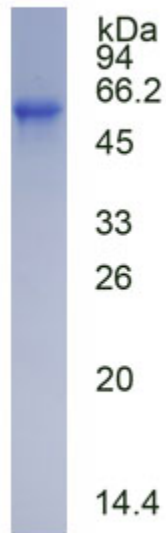


Figure. SDS-PAGE

## **[IMPORTANT NOTE]**

The kit is designed for research use only, we will not be responsible for any issue if the kit was used in clinical diagnostic or any other procedures.

