

Recombinant Wiskott Aldrich Syndrome Protein Family, Member 2 (WASF2) Instruction Manual

SIPE269Hu02

Homo sapiens (Human)

Source	Prokaryotic expression
Host	E.coli
Endotoxin Level	<1.0EU per 1µg (determined by the LAL method)
Subcellular Location	Cytoplasm
Predicted Molecular Mass	77.0kDa
Accurate Molecular Mass	46kDa(Analysis of differences refer to the manual)
Residues & Tags	Met1~Asp435 with N-terminal His and GST Tag
Buffer Formulation	PBS, pH7.4, containing 0.01% SKL, 5% Trehalose.
Traits	Freeze-dried powder
Purity	> 80%
Isoelectric Point	7.6
Applications	Positive Control; Immunogen; SDS-PAGE; WB.

SEQUENCE

```
MPLVTRNIEP RHLCRQTLPS VRSELECVTN ITLANVIRQL GSLSKYAEDI FGELFTQANT FASRVSSLAE RVDRLQVKVT
QLDPKEEEVS LQGINTRKAF RSSTIQDQKL FDRNSLPVPV LETYNTCDTP PPLNNLTPYR DDGKEALKFY TDPSYFFDLW
KEKMLQDTKD IMKEKRKHRK EKKDNPNRGN VNPRKIKTRK EEWEKMKMGQ EFVESKEKLG TSGYPPTLVY QNGSIGCVEN
VDASSYPPPP QSDSASSPSP SFSEDNLPPP PAEFSYPVDN QRGSGLAGPK RSSVVSPSHP PPAPPLGSPG GPKPGFAPPP
APPPPPPMI GIPPPPPVVG FGSPGTPPP SPPSFPPHPD FAAPPPPPP PAADYPTLPP PPLSQPTGGA PPPPPPPPP
GPPPPPFPGA DGQPAIPPL SDTTKPKSSL PAVSD
```

USAGE

Reconstitute in 10mM PBS (pH7.4) to a concentration of 0.1-1.0 mg/mL. Do not vortex.

STORAGE

Avoid repeated freeze/thaw cycles. Store at 2-8°C for one month. Aliquot and store at -80°C for 12 months.

STABILITY

The thermal stability is described by the loss rate. The loss rate was determined by accelerated thermal degradation test, that is, incubate the protein at 37°C for 48h, and no obvious degradation and precipitation were observed. The loss rate is less than 5% within the expiration date under appropriate storage condition.

Image

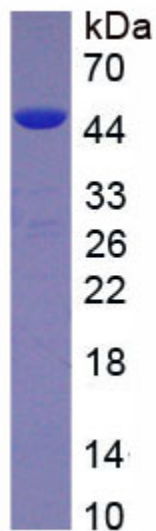


Figure. SDS-PAGE

[IMPORTANT NOTE]

The kit is designed for research use only, we will not be responsible for any issue if the kit was used in clinical diagnostic or any other procedures.