

Recombinant Aldehyde Dehydrogenase 1 Family, Member A1 (ALDH1A1) Instruction Manual

SIPE354Hu01

Homo sapiens (Human)

Source	Prokaryotic expression
Host	E.coli
Endotoxin Level	<1.0EU per 1µg (determined by the LAL method)
Subcellular Location	Cytoplasm
Predicted Molecular Mass	58.4kDa
Accurate Molecular Mass	58kDa(Analysis of differences refer to the manual)
Residues & Tags	Ser2~Ser501 with N-terminal His Tag
Buffer Formulation	20mM Tris, 150mM NaCl, pH8.0, containing 0.01% SKL, 5% Trehalose.
Traits	Freeze-dried powder
Purity	> 90%
Isoelectric Point	6.3
Applications	Positive Control; Immunogen; SDS-PAGE; WB.

SEQUENCE

```
SSSGTPDLP VLLTDLKIQY TKIFINNEWH DSVSGKKFPV FNPATEEELC  
QVEEGDKEDV DKAVKAARQA FQIGSPWRTM DASERGRLLY KLADLIERDR  
LLLATMESMN GKKLYSNAYL NDLAGCIKTL RYCAGWADKI QGRTIPIDGN  
FFTYTRHEPI GVCQIIPWN FPLVMLIWKI GPALSCGNTV VVKPAEQTPL  
TALHVASLIK EAGFPPGVVN IVPYGPTAG AAISSHMDID KVAFTGSTEV  
GKLIKEAAGK SNLKRVTLEL GKGSPCIVLA DADLDNAVEF AHHG VFYHQG  
QCCIAASRIF VEESYDEFV RRSVERAKKY ILGNPLTPGV TQGPQIDKEQ  
YDKILD LIES GKKEGAKLEC GGGPWGNKGY FVQPTVFSNV TDEMRIA KEE  
IFGPVQQIMK FKSLDDVIKR ANNTFYGLSA GVFTKDIDKA ITISSALQAG  
TVWVNCYGVV SAQCPF GGFK MSGNGRELGE YGFHEYTEVK TVTVKISQKN  
S
```

USAGE

Reconstitute in ddH₂O to a concentration of 0.1-0.5 mg/mL. Do not vortex.

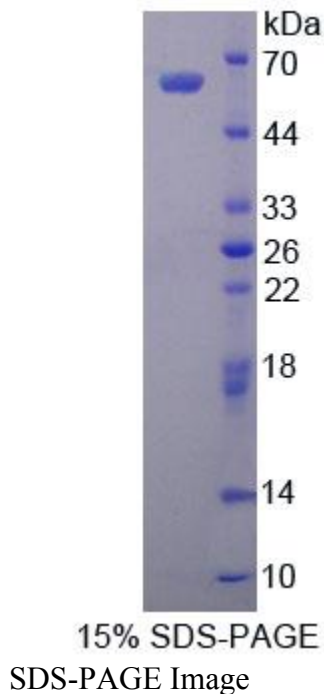
STORAGE

Avoid repeated freeze/thaw cycles. Store at 2-8°C for one month. Aliquot and store at -80°C for 12 months.

STABILITY

The thermal stability is described by the loss rate. The loss rate was determined by accelerated thermal degradation test, that is, incubate the protein at 37°C for 48h, and no obvious degradation and precipitation were observed. The loss rate is less than 5% within the expiration date under appropriate storage condition.

Image



[IMPORTANT NOTE]

The kit is designed for research use only, we will not be responsible for any issue if the kit was used in clinical diagnostic or any other procedures.