

# Recombinant Inositol-1,4,5-Trisphosphate Receptor Type 1 (ITPR1) Instruction Manual

**SIPE390Hu01**

**Homo sapiens (Human)**

<b>Source</b>	Prokaryotic expression
<b>Host</b>	E.coli
<b>Endotoxin Level</b>	<1.0EU per 1 $\mu$ g (determined by the LAL method)
<b>Subcellular Location</b>	Membrane, Cytoplasm
<b>Predicted Molecular Mass</b>	23.5kDa
<b>Accurate Molecular Mass</b>	27kDa(Analysis of differences refer to the manual)
<b>Residues &amp; Tags</b>	Gly112~Val287 with N-terminal His Tag
<b>Buffer Formulation</b>	PBS, pH7.4, containing 0.01% SKL, 5% Trehalose.
<b>Traits</b>	Freeze-dried powder
<b>Purity</b>	> 95%
<b>Isoelectric Point</b>	8.8
<b>Applications</b>	Positive Control; Immunogen; SDS-PAGE; WB.

## SEQUENCE

```
          GTVIQYGNV IQLLHLKSNK YLTVNKRLPA LLEKNAMRVT
LDEAGNEGSW FYIQPFYKLR SIGDSVVIGD KVVLPVNAG QPLHASSHQL
VDNPGCNEVN SVNCNTSWKI VLFMKWSDNK DDILKGGDVV RLFHAEQEKF
LTCDEHRKKQ HVFLRTTGRQ SATSATSSKA LWEVEVV
```

## USAGE

Reconstitute in 10mM PBS (pH7.4) to a concentration of 0.1-1.0 mg/mL. Do not vortex.

## STORAGE

Avoid repeated freeze/thaw cycles. Store at 2-8°C for one month. Aliquot and store at -80°C for 12 months.

## STABILITY

The thermal stability is described by the loss rate. The loss rate was determined by accelerated thermal degradation test, that is, incubate the protein at 37°C for 48h, and no obvious degradation and precipitation were observed. The loss rate is less than 5% within the expiration date under appropriate storage condition.

## Image

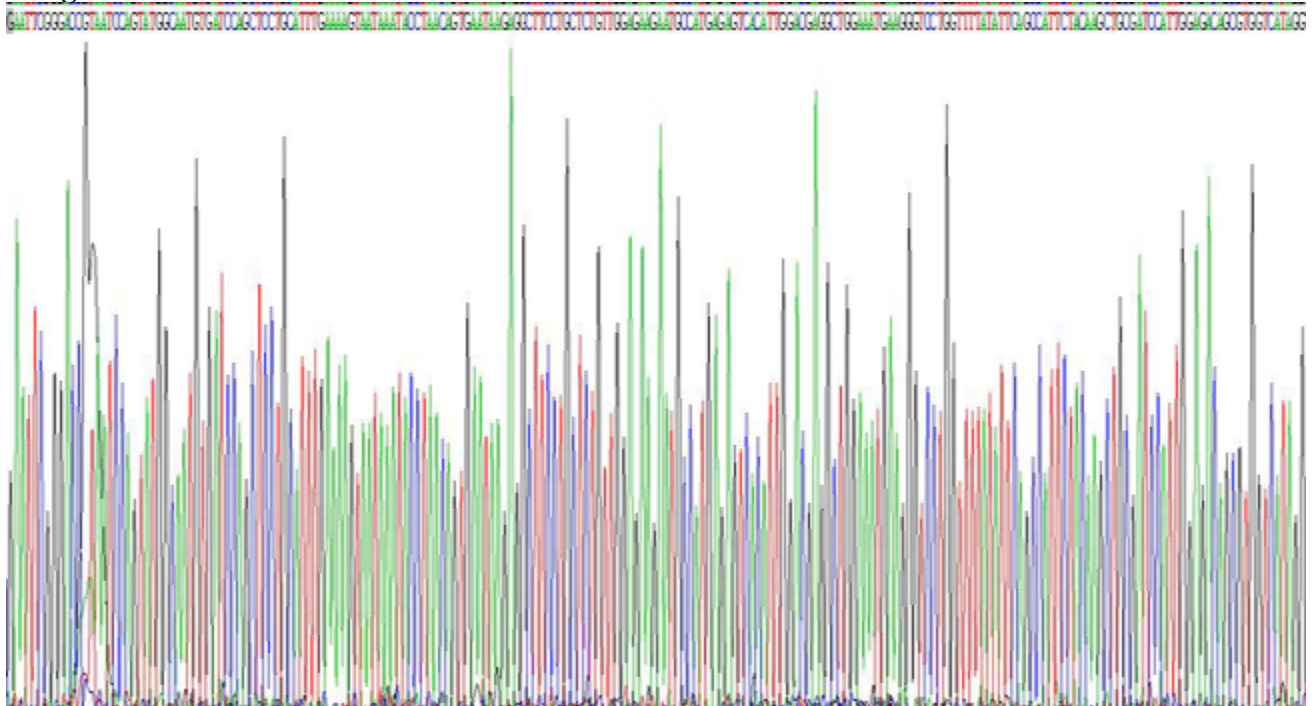


Figure. SDS-PAGE

## **[IMPORTANT NOTE]**

The kit is designed for research use only, we will not be responsible for any issue if the kit was used in clinical diagnostic or any other procedures.