

# Recombinant Tripeptidyl Peptidase II (TPP2) Instruction Manual

SIPE393Hu01

**Homo sapiens (Human)**

|                                 |   |
|---------------------------------|---|
| <b>Source</b>                   | Prokaryotic expression  |
| <b>Host</b>                     | E.coli  |
| <b>Endotoxin Level</b>          | <1.0EU per 1µg (determined by the LAL method)   |
| <b>Subcellular Location</b>     | Nucleus, Cytoplasm  |
| <b>Predicted Molecular Mass</b> | 54.1kDa   |
| <b>Accurate Molecular Mass</b>  | 54kDa(Analysis of differences refer to the manual)  |
| <b>Residues &amp; Tags</b>      | Ile40~Asp509 with N-terminal His Tag  |
| <b>Buffer Formulation</b>       | 20mM Tris, 150mM NaCl, pH8.0, containing 1mM EDTA, 1mM DTT, 0.01% SKL, 5% Trehalose and Proclin300. |
| <b>Traits</b>                   | Freeze-dried powder   |
| <b>Purity</b>                   | > 95%   |
| <b>Isoelectric Point</b>        | 5.3   |
| <b>Applications</b>             | Positive Control; Immunogen; SDS-PAGE; WB.  |

## SEQUENCE

```

                                     I AVLDTGVDPG
APGMQVTTDG KPKIVDIIIDT TGSGDVNTAT EVEPKDGEIV GLSGRVLKIP
ASWTNPSGKY HIGIKNGYDF YPKALKERIQ KERKEKIWDP VHRVALAEAC
RKQEEFDVAN NGSSQANKLI KEELQSQVEL LNSFEKKYSD PGPVYDCLW
HDGEVWRACI DSNEDGDLSK STVLRNYKEA QEYGSFGTAE MLNYSVNIYD
DGNLLSIVTS GGAHGTHVAS IAAGHFPEEP ERNGVAPGAQ ILSIKIGDTR
LSTMETGTGL IRAMIEVINH KCDLVNYSYG EATHWPNSGR ICEVINEAVW
KHNIIVSSA GNNGPCLSTV GCPGGTSSV IGVGAYVSPD MMVAEYSLRE
KLPANQYTW S SRGPSADGAL GVSISAPGGA IASVPNWTLR GTQLMNGTSM
SSPNACGGIA LILSGLKANN IDYTVHSVRR ALENTAVKAD NIEVFAQGHG
IIQVDKAYD
```

## USAGE

Reconstitute in 20mM Tris, 150mM NaCl (pH8.0) to a concentration of 0.1-1.0 mg/mL. Do not vortex.

## STORAGE

Avoid repeated freeze/thaw cycles. Store at 2-8°C for one month. Aliquot and store at -80°C for 12 months.

## STABILITY

The thermal stability is described by the loss rate. The loss rate was determined by accelerated thermal degradation test, that is, incubate the protein at 37°C for 48h, and no obvious degradation and precipitation were observed. The loss rate is less than 5% within the expiration date under appropriate storage condition.

## Image

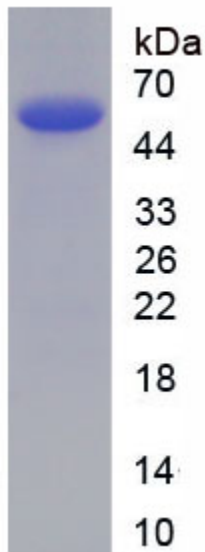


Figure. SDS-PAGE

## **[IMPORTANT NOTE]**

The kit is designed for research use only, we will not be responsible for any issue if the kit was used in clinical diagnostic or any other procedures.