

Recombinant Gasdermin D (GSDMD) Instruction Manual

SIPE588Ra01

Rattus norvegicus (Rat)

Source	Prokaryotic expression
Host	E.coli
Endotoxin Level	<1.0EU per 1µg (determined by the LAL method)
Subcellular Location	Nucleus, Extracellular matrix
Predicted Molecular Mass	39.5KDa
Accurate Molecular Mass	40kDa(Analysis of differences refer to the manual)
Residues & Tags	Met1~Pro326 with N-terminal His Tag
Buffer Formulation	PBS, pH7.4, containing 0.01% SKL, 5% Trehalose.
Traits	Freeze-dried powder
Purity	> 90%
Isoelectric Point	6.0
Applications	Positive Control; Immunogen; SDS-PAGE; WB.

SEQUENCE

```
MPSAFAGVVK NVIKEVGGSG GELIPVDCLR NSTSFKPYCL LSRKLSSSWF  
WKPRYTCVNL SIKDILEPSA PEPEPECFGN FQVSDVVDGN IQGSVTLSGT  
GQGKISGGAA VSGSSSASMN VCMLRVVTQQT WEIMQRERHL QQPENKILQQ  
LRNRGDDVVFV VTEVLQTKEE VQITQVHSHE GSGQFTLPGA SCLQGEKKGH  
QSRKKMVTIP AGSILAFRVA QLLIGSEWDI LLISNEKKRT FELPSSGHKG  
AVGQRRHDFS LLAVLHSIGE RLSLKS DGTN EEEVIREDFQ GLRAEVEAGS  
SELR SLEMEL RQQLLV DIGR ILQDQP
```

USAGE

Reconstitute in 10mM PBS (pH7.4) to a concentration of 0.1-1.0 mg/mL. Do not vortex.

STORAGE

Avoid repeated freeze/thaw cycles. Store at 2-8°C for one month. Aliquot and store at -80°C for 12 months.

STABILITY

The thermal stability is described by the loss rate. The loss rate was determined by accelerated thermal degradation test, that is, incubate the protein at 37°C for 48h, and no obvious degradation and precipitation were observed. The loss rate is less than 5% within the expiration date under appropriate storage condition.

Image

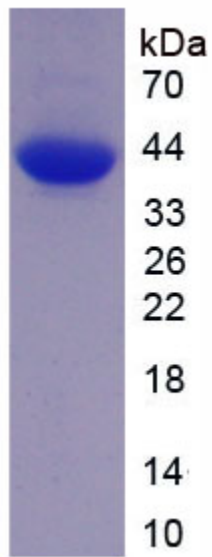


Figure. SDS-PAGE

[IMPORTANT NOTE]

The kit is designed for research use only, we will not be responsible for any issue if the kit was used in clinical diagnostic or any other procedures.