

Recombinant Aldehyde Dehydrogenase 1 Family, Member A2 (ALDH1A2) Instruction Manual

SIPE676Hu01

Homo sapiens (Human)

Source	Prokaryotic expression
Host	E.coli
Endotoxin Level	<1.0EU per 1µg (determined by the LAL method)
Subcellular Location	Cytoplasm
Predicted Molecular Mass	49.8kDa
Accurate Molecular Mass	50kDa(Analysis of differences refer to the manual)
Residues & Tags	Met1~Ser422 with N-terminal His Tag
Buffer Formulation	100mMNaHCO ₃ , 500mMNaCl, pH8.3, containing 1mM EDTA, 1mM DTT, 0.01% SKL, 5% Trehalose and Proclin300.
Traits	Freeze-dried powder
Purity	> 97%
Isoelectric Point	6.0
Applications	Positive Control; Immunogen; SDS-PAGE; WB.

SEQUENCE

```
MDASERGRLL DKLADLVERD RAVLATMESL NGGKPFQAF YVDLQVIKT  
FRYYAGWADK IHGMTIPVDG DYFTFTRHEP IGVCQIIPW NFPLLMFAWK  
IAPALCCGNT VVIKPAEQTP LSALYMGALI KEAGFPPGVI NILPGYGPTA  
GAAIASHIGI DKIAFTGSTE VGKLIQEAAQ RSNLKRVTLE LGGKSPNIIF  
ADADLDYAVE QAHQGVFFNQ GQCCTAGSRI FVEESIYEEF VRRSVERAKR  
RVVGSPFDPT TEQGPQIDKK QYNKILELIQ SGVAEGAKLE CGGKGLGRKG  
FFIEPTVFSN VTDDMRIAKE EIFGPVQEIL RFKTMDEVIE RANNSDFGLV  
AAVFTNDINK ALTVSSAMQA GTVWINCYNL LNAQSPFGGF KMSGNGREMG  
EFGLEREYSEV KTVTVKIPQK NS
```

USAGE

Reconstitute in ddH₂O to a concentration of 0.1-1.0 mg/mL. Do not vortex.

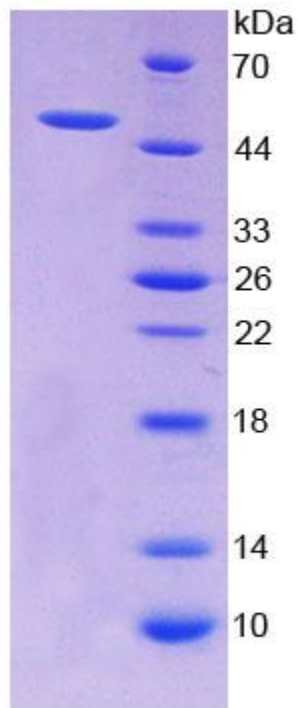
STORAGE

Avoid repeated freeze/thaw cycles. Store at 2-8°C for one month. Aliquot and store at -80°C for 12 months.

STABILITY

The thermal stability is described by the loss rate. The loss rate was determined by accelerated thermal degradation test, that is, incubate the protein at 37°C for 48h, and no obvious degradation and precipitation were observed. The loss rate is less than 5% within the expiration date under appropriate storage condition.

Image



15% SDS-PAGE
SDS-PAGE Image

[IMPORTANT NOTE]

The kit is designed for research use only, we will not be responsible for any issue if the kit was used in clinical diagnostic or any other procedures.