

# Recombinant Na-K-Cl Cotransporter 2 (NKCC2) Instruction Manual

**SIPE751Hu01**

**Homo sapiens (Human)**

<b>Source</b>	Prokaryotic expression
<b>Host</b>	E.coli
<b>Endotoxin Level</b>	<1.0EU per 1µg (determined by the LAL method)
<b>Subcellular Location</b>	Secreted
<b>Predicted Molecular Mass</b>	36.8kDa
<b>Accurate Molecular Mass</b>	39kDa(Analysis of differences refer to the manual)
<b>Residues &amp; Tags</b>	Arg814~Ser1099 with
<b>Buffer Formulation</b>	PBS, pH7.4, containing 0.01% SKL, 5% Trehalose.
<b>Traits</b>	Freeze-dried powder
<b>Purity</b>	> 95%
<b>Isoelectric Point</b>	n/a
<b>Applications</b>	Positive Control; Immunogen; SDS-PAGE; WB.

## SEQUENCE

```
                RISQGF  ISQVLQVQEE  LERLEQERLA  LEATIKDNEC
EEESGGIRGL  FKKAGKLNIT  KTTPKKDGSI  NTSQSMHVGE  FNQKLVEAST
QFKKKQEKGT  IDVWWLFDDG  GLTLLIPYIL  TLRKKWKDCK  LRIYVGGKIN
RIEEEKIVMA  SLLSKFRIKF  ADIHIIGDIN  IRPNKESWKV  FEEMIEPYRL
HESCKDLTTA  EKLKRETPWK  ITDAELEAVK  EKSQRQVRLN  ELLQEHSRAA
NLIVLSLPVA  RKGISDILLY  MAWLEILTKN  LPPVLLVRGN  HKNVLTfYS
```

## USAGE

Reconstitute in PBS or others.

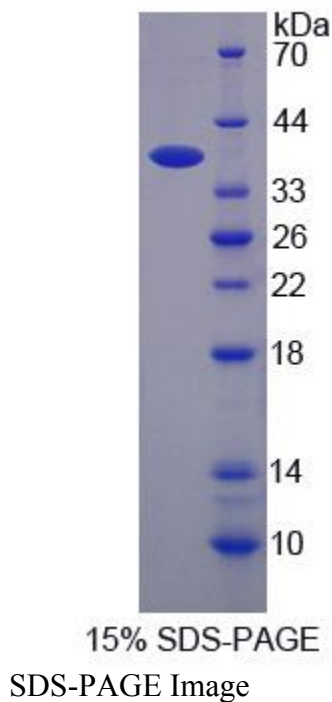
## STORAGE

Avoid repeated freeze/thaw cycles. Store at 2-8°C for one month. Aliquot and store at -80°C for 12 months.

## **STABILITY**

The thermal stability is described by the loss rate. The loss rate was determined by accelerated thermal degradation test, that is, incubate the protein at 37°C for 48h, and no obvious degradation and precipitation were observed. The loss rate is less than 5% within the expiration date under appropriate storage condition.

## **Image**



## **[IMPORTANT NOTE]**

The kit is designed for research use only, we will not be responsible for any issue if the kit was used in clinical diagnostic or any other procedures.