

Recombinant Glutamate Receptor, Ionotropic, AMPA 1 (GRIA1) Instruction Manual

SIPE890Hu01

Homo sapiens (Human)

Source	Prokaryotic expression
Host	E.coli
Endotoxin Level	<1.0EU per 1µg (determined by the LAL method)
Subcellular Location	Membrane
Predicted Molecular Mass	70kDa
Accurate Molecular Mass	65kDa(Analysis of differences refer to the manual)
Residues & Tags	Gln37~Gly375 with N-terminal His and GST Tag
Buffer Formulation	20mM Tris, 150mM NaCl, pH8.0, containing 0.01% SKL, 5% Trehalose.
Traits	Freeze-dried powder
Purity	> 90%
Isoelectric Point	8.2
Applications	Positive Control; Immunogen; SDS-PAGE; WB.

SEQUENCE

```

                                         QEHA AFRFALSQLT
EPPKLLPQID IVNISDSFEM TYRFCSQFSK GVYAIFGFYE RRTVNMLTSF
CGALHVCFIT PSFPVDTSNQ FVLQLRPELQ DALISIIDHY KWQKFVYIYD
ADRGLSVLQK VLDTAAEKNW QVTAVNILT TEEGYRMLFQ DLEKKKERLV
VVDCESERLN AILGQIIKLE KNGIGYHYIL ANLGFMDIDL NKFKESGANV
TGFQLVNYTD TIPAKIMQQW KNSDARDHTR VDWRPKYTS ALTYDGVKVM
AEAFAQSLRRQ RIDISRRGNA GDCLANPAVP WGQGIDIQRA LQQVRFEGLT
GNVQFNEKGR RTNYTLHVIE MKHDG
```

USAGE

Reconstitute in ddH₂O to a concentration of 0.1-0.5 mg/mL. Do not vortex.

STORAGE

Avoid repeated freeze/thaw cycles. Store at 2-8°C for one month. Aliquot and store at -80°C for 12 months.

STABILITY

The thermal stability is described by the loss rate. The loss rate was determined by accelerated thermal degradation test, that is, incubate the protein at 37°C for 48h, and no obvious degradation and precipitation were observed. The loss rate is less than 5% within the expiration date under appropriate storage condition.

Image

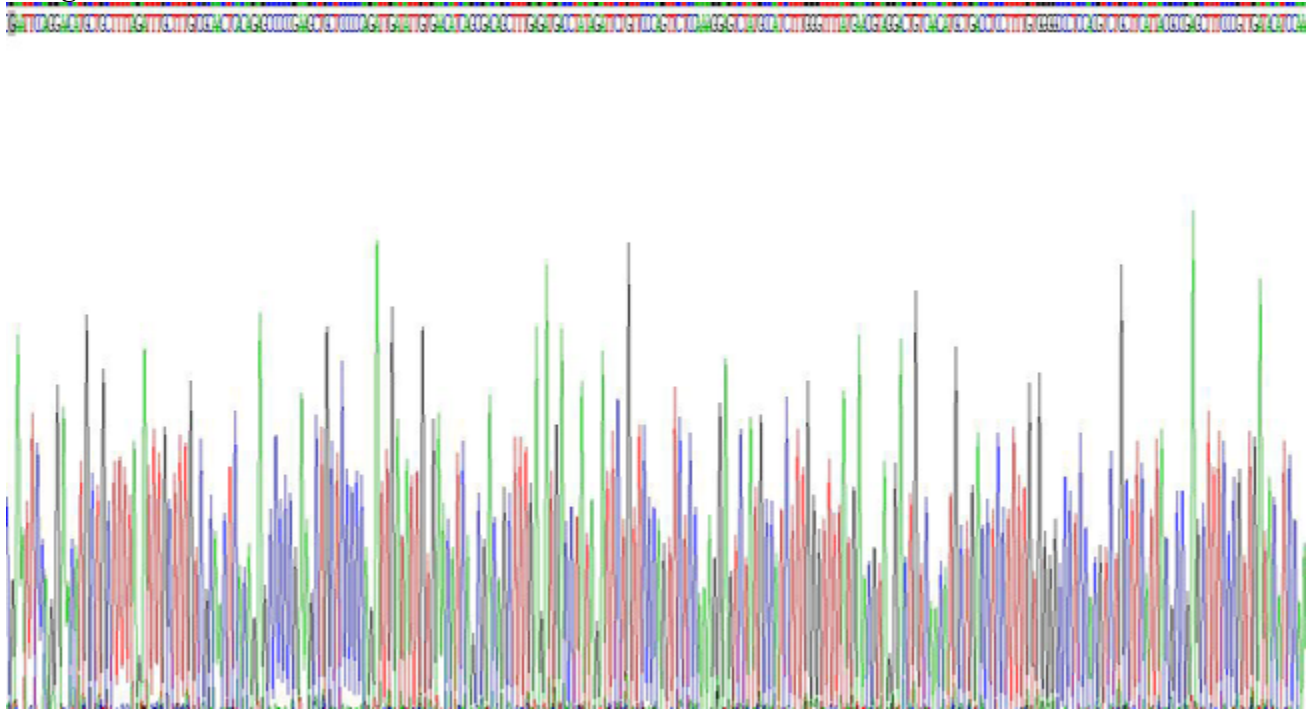


Figure. SDS-PAGE

[IMPORTANT NOTE]

The kit is designed for research use only, we will not be responsible for any issue if the kit was used in clinical diagnostic or any other procedures.