

Recombinant G Protein Alpha 11 (GNa11) Instruction Manual

SIPF040Hu01

Homo sapiens (Human)

Source	Prokaryotic expression
Host	E.coli
Endotoxin Level	<1.0EU per 1µg (determined by the LAL method)
Subcellular Location	Membrane, Cytoplasm
Predicted Molecular Mass	45.8kDa
Accurate Molecular Mass	46kDa(Analysis of differences refer to the manual)
Residues & Tags	Met1~Val359 with N-terminal His Tag
Buffer Formulation	20mM Tris, 150mM NaCl, pH8.0, containing 1mM EDTA, 1mM DTT, 0.01% SKL, 5% Trehalose and Proclin300.
Traits	Freeze-dried powder
Purity	> 97%
Isoelectric Point	5.5
Applications	Positive Control; Immunogen; SDS-PAGE; WB.

SEQUENCE

```
MTLESMMACC LSDEVKESKR INAEIEKQLR RDKRDARREL KLLLLGTGES
GKSTFIKQMR IIHGAGYSEE DKRGFTKLVY QNIFTAMQAM IRAMETLKIL
YKYEQNKANA LLIREVDVEK VTTFEHQYVS AIKTLWEDPG IQECYDRRRE
YQLSDSAKYY LTDVDRIATL GYLPTQQDVL RVRVPTTGII EYPFDLENII
FRMVDVGGQR SERRKWIHCF ENVTSIMFLV ALSEYDQVLV ESDNENRMEE
SKALFRITIT YPWFQNSSVI LFLNKKDLLE DKILYSHLVD YFPEFDGPQR
DAQAAREFIL KMFVDLNPDS DKIIYSHFTC ATDTENIRFV FAAVKDTILQ
LNLKEYNLV
```

USAGE

Reconstitute in ddH₂O to a concentration ≤0.1 mg/mL. Do not vortex.

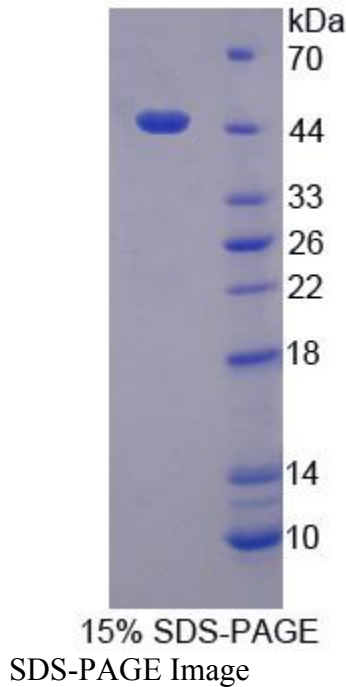
STORAGE

Avoid repeated freeze/thaw cycles. Store at 2-8°C for one month. Aliquot and store at -80°C for 12 months.

STABILITY

The thermal stability is described by the loss rate. The loss rate was determined by accelerated thermal degradation test, that is, incubate the protein at 37°C for 48h, and no obvious degradation and precipitation were observed. The loss rate is less than 5% within the expiration date under appropriate storage condition.

Image



[IMPORTANT NOTE]

The kit is designed for research use only, we will not be responsible for any issue if the kit was used in clinical diagnostic or any other procedures.