

Recombinant Cytokine Receptor Like Factor 1 (CRLF1) Instruction Manual

SIPF111Hu01

Homo sapiens (Human)

Source	Prokaryotic expression
Host	E.coli
Endotoxin Level	<1.0EU per 1µg (determined by the LAL method)
Subcellular Location	Secreted
Predicted Molecular Mass	62.2kDa
Accurate Molecular Mass	62kDa(Analysis of differences refer to the manual)
Residues & Tags	Pro138~Arg422 with N-terminal His and GST Tag
Buffer Formulation	20mM Tris, 150mM NaCl, pH8.0, containing 1mM EDTA, 1mM DTT, 0.01% SKL, 5% Trehalose and Proclin300.
Traits	Freeze-dried powder
Purity	> 95%
Isoelectric Point	9.2
Applications	Positive Control; Immunogen; SDS-PAGE; WB.

SEQUENCE

PVN ISCWSKNMKD
LTCRWTPGAH GETFLHTNYS LKYKLRWYGQ DNTCEEYHTV GPHSCHIPKD
LALFTPYEIW VEATNRLGSA RSDVLTLDIL DVVTTDPPPD VHVS RVGGLE
DQLSVRWVSP PALKDFLFQA KYQIRYRVED SVDWKVVDDV SNQTSCLAG
LKPGTVYFVQ VRCNPFGIYG SKKAGIWSEW SHPTAASTPR SERPGPGGA
CEPRGGEPSS GPVRRELKQF LGWLKKHAYC SNLSFRLYDQ WRAWMQKSHK
TRNQDEGILP SGRRGTARGP AR

USAGE

Reconstitute in ddH₂O to a concentration of 0.1-0.5 mg/mL. Do not vortex.

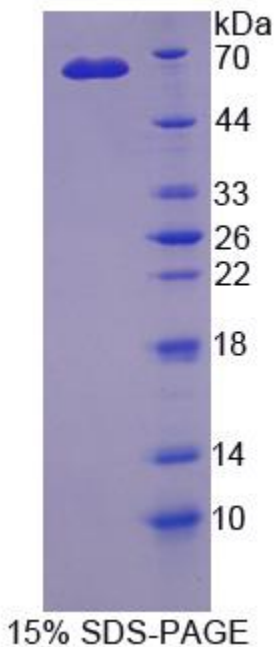
STORAGE

Avoid repeated freeze/thaw cycles. Store at 2-8°C for one month. Aliquot and store at -80°C for 12 months.

STABILITY

The thermal stability is described by the loss rate. The loss rate was determined by accelerated thermal degradation test, that is, incubate the protein at 37°C for 48h, and no obvious degradation and precipitation were observed. The loss rate is less than 5% within the expiration date under appropriate storage condition.

Image



SDS-PAGE Image

[IMPORTANT NOTE]

The kit is designed for research use only, we will not be responsible for any issue if the kit was used in clinical diagnostic or any other procedures.