

Recombinant Phosphodiesterase 4D, cAMP Specific (PDE4D) Instruction Manual

SIPF254Hu01

Homo sapiens (Human)

Source	Prokaryotic expression
Host	E.coli
Endotoxin Level	<1.0EU per 1µg (determined by the LAL method)
Subcellular Location	Membrane, Cytoplasm
Predicted Molecular Mass	56.1kDa
Accurate Molecular Mass	56kDa(Analysis of differences refer to the manual)
Residues & Tags	Leu581~Thr809 with N-terminal His and GST Tag
Buffer Formulation	20mM Tris, 150mM NaCl, pH8.0, containing 0.01% SKL, 5% Trehalose.
Traits	Freeze-dried powder
Purity	> 90%
Isoelectric Point	4.1
Applications	Positive Control; Immunogen; SDS-PAGE; WB.

SEQUENCE

```
LLADLKT MVE TKKVTSSGVL  
LLDNYSDRIQ VLQNMVHCAD LSNPTKPLQL YRQWTD RIME EFFRQGD RER  
ERGMEISPMC DKHNASVEKS QVGFIDYIVH PLWETWADLV HPDAQDILDT  
LEDNREWYQS TIPQSPSPAP DDPEEGRQGQ TEKFQFELTL EEDGESDTEK  
DSGSQVEEDT SCSDSKTLCT QDSESTEIPL DEQVEEEAVG EEEESQPEAC  
VIDDRSPDT
```

USAGE

Reconstitute in ddH₂O to a concentration of 0.1-0.5 mg/mL. Do not vortex.

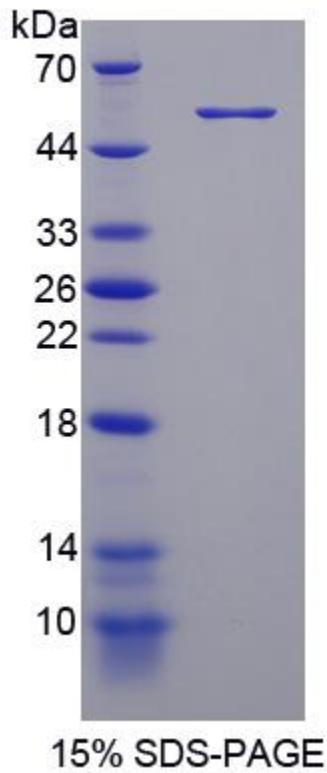
STORAGE

Avoid repeated freeze/thaw cycles. Store at 2-8°C for one month. Aliquot and store at -80°C for 12 months.

STABILITY

The thermal stability is described by the loss rate. The loss rate was determined by accelerated thermal degradation test, that is, incubate the protein at 37°C for 48h, and no obvious degradation and precipitation were observed. The loss rate is less than 5% within the expiration date under appropriate storage condition.

Image



SDS-PAGE Image

[IMPORTANT NOTE]

The kit is designed for research use only, we will not be responsible for any issue if the kit was used in clinical diagnostic or any other procedures.

