

Recombinant Phosphatase And Tensin Homolog (PTEN) Instruction Manual

SIPF360Hu01

Homo sapiens (Human)

Source	Prokaryotic expression
Host	E.coli
Endotoxin Level	<1.0EU per 1µg (determined by the LAL method)
Subcellular Location	Nucleus, Secreted, Cytoplasm
Predicted Molecular Mass	48.6kDa
Accurate Molecular Mass	55kDa(Analysis of differences refer to the manual)
Residues & Tags	Thr2~Val403 with N-terminal His Tag
Buffer Formulation	20mM Tris, 150mM NaCl, pH8.0, containing 0.01% SKL, 5% Trehalose.
Traits	Freeze-dried powder
Purity	> 90%
Isoelectric Point	6.1
Applications	Positive Control; Immunogen; SDS-PAGE; WB.

SEQUENCE

```
TAIIKEIVS RNKRRYQEDG FDLDLTYIYP NIIAMGFPAE RLEGVYRNNI  
DDVVRFLDSK HKNHYKIYNL CAERHYDTAK FNCRVAQYPF EDHNPPQLEL  
IKPFCEDLDQ WLSEDDNHVA AIHCKAGKGR TGMICAYLL HRGKFLKAQE  
ALDFYGEVRT RDKKGV TIPS QRRYVYYYSY LLKNHLDYRP VALLFHKMMF  
ETIPMFSGGT CNPQFVVCQL KVKIYSSNSG PTRREDKFMY FEFQPPLPVC  
GDIKVEFFHK QNKMLKKDKM FHFVWNTFFI PGPEETSEKV ENGLCDQEI  
DSICSIERAD NDKEYLVLT LTKNDLDKANK DKANRYFSPN FKVKLYFTKT  
VEEPSNPEAS SSTSVPDVS DNEPDHYRYS DTTDSDPENE PFDEDQHTQI  
TKV
```

USAGE

Reconstitute in ddH₂O to a concentration of 0.1-0.5 mg/mL. Do not vortex.

STORAGE

Avoid repeated freeze/thaw cycles. Store at 2-8°C for one month. Aliquot and store at -80°C for 12 months.

STABILITY

The thermal stability is described by the loss rate. The loss rate was determined by accelerated thermal degradation test, that is, incubate the protein at 37°C for 48h, and no obvious degradation and precipitation were observed. The loss rate is less than 5% within the expiration date under appropriate storage condition.

Image

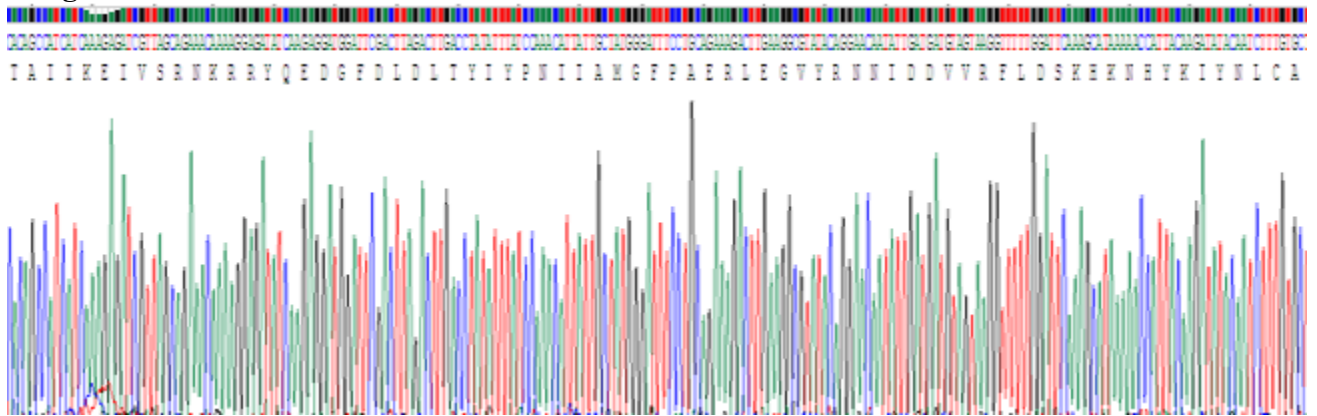


Figure. SDS-PAGE

[IMPORTANT NOTE]

The kit is designed for research use only, we will not be responsible for any issue if the kit was used in clinical diagnostic or any other procedures.