

Recombinant Metastasis Associated Protein 2 (MTA2) Instruction Manual

SIPF822Hu01

Homo sapiens (Human)

Source	Prokaryotic expression
Host	E.coli
Endotoxin Level	<1.0EU per 1µg (determined by the LAL method)
Subcellular Location	Nucleus
Predicted Molecular Mass	48.6kDa
Accurate Molecular Mass	49kDa(Analysis of differences refer to the manual)
Residues & Tags	Met1~Cys394 with N-terminal His Tag
Buffer Formulation	PBS, pH7.4, containing 0.01% SKL, 5% Trehalose.
Traits	Freeze-dried powder
Purity	> 80%
Isoelectric Point	6.0
Applications	Positive Control; Immunogen; SDS-PAGE; WB.

SEQUENCE

```
MAANMYRVGD VYFENSSSN PYLVRRIEEL NKTANGNVEA KVVCLFRRRD  
ISSSLNSLAD SNAREFEEES KQPGVSEQQR HQLKHRELFL SRQFESLPAT  
HIRGKCSVTL LNETDILSQY LEKEDCFFYS LVFDPVQKTL LADQGEIRVG  
CKYQAEIPDR LVEGESDNRN QQKMEMKVWD PDNPLTDRQI DQFLVVARAV  
GTFARALDCS SSIRQPSLHM SAAAASRDIT LFHAMDTLQR NGYDLAKAMS  
TLVPQGGPVL CRDEMEEWSA SEAMLFEEAL EKYGKDFNDI RQDFLPWKSL  
ASIVQFYMW KTTDRYIQQK RLKAAEADSK LKQVYIPTYT KPNPNQIISV  
GSKPGMNGAG FQKGLTCEC HTTQSAQWYA WGPPNMQCRL CASC
```

USAGE

Reconstitute in ddH₂O to a concentration of 0.1-0.5 mg/mL. Do not vortex.

STORAGE

Avoid repeated freeze/thaw cycles. Store at 2-8°C for one month. Aliquot and store at -80°C for 12 months.

STABILITY

The thermal stability is described by the loss rate. The loss rate was determined by accelerated thermal degradation test, that is, incubate the protein at 37°C for 48h, and no obvious degradation and precipitation were observed. The loss rate is less than 5% within the expiration date under appropriate storage condition.

Image

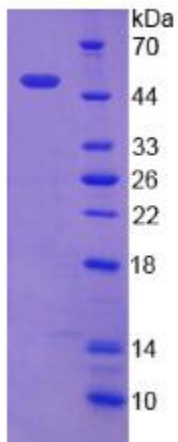


Figure. SDS-PAGE

[IMPORTANT NOTE]

The kit is designed for research use only, we will not be responsible for any issue if the kit was used in clinical diagnostic or any other procedures.