

Recombinant Leucine Rich Repeat Containing G Protein Coupled Receptor 5 (LGR5) Instruction Manual

SIPG029Mu01

Mus musculus (Mouse)

Source	Prokaryotic expression
Host	E.coli
Endotoxin Level	<1.0EU per 1µg (determined by the LAL method)
Subcellular Location	Membrane
Predicted Molecular Mass	36.3kDa
Accurate Molecular Mass	33kDa(Analysis of differences refer to the manual)
Residues & Tags	Ser23~Ser316 with N-terminal His Tag
Buffer Formulation	20mM Tris, 150mM NaCl, pH8.0, containing 0.01% SKL, 5% Trehalose.
Traits	Freeze-dried powder
Purity	> 95%
Isoelectric Point	6.5
Applications	Positive Control; Immunogen; SDS-PAGE; WB.

SEQUENCE

SSPGPDAI PRGCP SHCHC ELDGRMLLRV DCS DLGLSEL PSNLSVF TSY LDLSMNNISQ LPASLLHRLC FLEELRLAGN
ALTHIPKGAF TGLHSLKVL M LQNNQLRQVP EEALQNL RSL QSLRLDANHI SYVPPSCFSG LHSLRHLWLD DNALTDVPVQ
AFRSL SALQA MTLALNKIHH IADYAFGNLS SLVV LHLHNN RIHSLGKKCF DGLHSLETLD LNYNNLDEFP TAIKTL SNLK
ELGFHSNNIR SIPERAFVGN PSLITIH FYD NPIQFVG VSA FQHLPELRTL TLNGAS

USAGE

Reconstitute in 20mM Tris, 150mM NaCl (pH8.0) to a concentration of 0.1-1.0 mg/mL.
Do not vortex.

STORAGE

Avoid repeated freeze/thaw cycles. Store at 2-8°C for one month. Aliquot and store at -80°C for 12 months.

STABILITY

The thermal stability is described by the loss rate. The loss rate was determined by accelerated thermal degradation test, that is, incubate the protein at 37°C for 48h, and no obvious degradation and precipitation were observed. The loss rate is less than 5% within the expiration date under appropriate storage condition.

Image

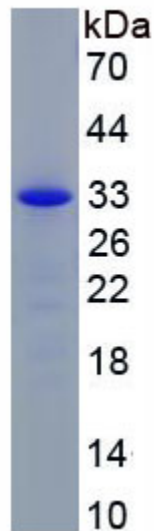


Figure. SDS-PAGE

[IMPORTANT NOTE]

The kit is designed for research use only, we will not be responsible for any issue if the kit was used in clinical diagnostic or any other procedures.