

Recombinant Myopalladin (MYPN) Instruction Manual

SIPG163Hu01

Homo sapiens (Human)

Source	Prokaryotic expression
Host	E.coli
Endotoxin Level	<1.0EU per 1µg (determined by the LAL method)
Subcellular Location	Nucleus, Cytoplasm
Predicted Molecular Mass	45.7kDa
Accurate Molecular Mass	46kDa(Analysis of differences refer to the manual)
Residues & Tags	Pro945~Leu1320 with N-terminal His Tag
Buffer Formulation	20mM Tris, 150mM NaCl, pH8.0, containing 1mM EDTA, 1mM DTT, 0.01% SKL, 5% Trehalose and Proclin300.
Traits	Freeze-dried powder
Purity	> 95%
Isoelectric Point	9.0
Applications	Positive Control; Immunogen; SDS-PAGE; WB.

SEQUENCE

PIFDKR
LKHFRVTEGS PVTFTCKIVG IPVPKVYWFK DGKQISKRNE HCKMRREGDG
TCSLHIESTT SDDDGNYSITIM AANPQGRISC SGHLMVQSLP IRSRLTSAGQ
SHRGRSRVQE RDKEPLQERF FRPHFLQAPG DMVAHEGRLC RLDCKVSGLP
PPELTWLLNG QPVLPDASHK MLVRETGVHS LLIDPLTQRD AGTYKCIATN
KGTQNSFSLE LSVVAKEVKK APVILEKLQN CGVPEGHPVR LECRVIGMPP
PVFYWKKDNE TIPCTRERIS MHQDTTGYAC LLIQPAKSD AGWYTLSAKN
EAGIVSCTAR LDIYAQWHHQ IPPPMSVRPS GSRYGSLTSK GLDIFSAFSS
MESTMVYSCS SRSVVEDEL

USAGE

Reconstitute in 20mM Tris, 150mM NaCl (pH8.0) to a concentration of 0.1-1.0 mg/mL.
Do not vortex.

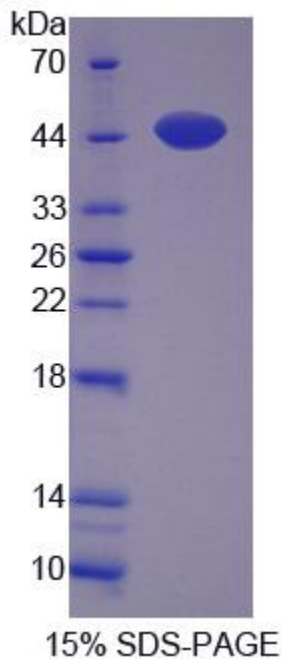
STORAGE

Avoid repeated freeze/thaw cycles. Store at 2-8°C for one month. Aliquot and store at -80°C for 12 months.

STABILITY

The thermal stability is described by the loss rate. The loss rate was determined by accelerated thermal degradation test, that is, incubate the protein at 37°C for 48h, and no obvious degradation and precipitation were observed. The loss rate is less than 5% within the expiration date under appropriate storage condition.

Image



SDS-PAGE Image

[IMPORTANT NOTE]

The kit is designed for research use only, we will not be responsible for any issue if the kit was used in clinical diagnostic or any other procedures.