

Recombinant ATPase, Ca⁺⁺ Transporting, Cardiac Muscle, Slow Twitch 2 (ATP2A2) Instruction Manual

SIPG302Hu01

Homo sapiens (Human)

Source	Prokaryotic expression
Host	E.coli
Endotoxin Level	<1.0EU per 1µg (determined by the LAL method)
Subcellular Location	Membrane, Endoplasmic reticulum lumen
Predicted Molecular Mass	78.2kDa
Accurate Molecular Mass	78kDa(Analysis of differences refer to the manual)
Residues & Tags	Ile315~Met756 with N-terminal His and GST Tag
Buffer Formulation	100mMNaHCO ₃ , 500mMNaCl, pH8.3, containing 1mM EDTA, 1mM DTT, 0.01% SKL, 5% Trehalose and Proclin300.
Traits	Freeze-dried powder
Purity	> 90%
Isoelectric Point	6.4
Applications	Positive Control; Immunogen; SDS-PAGE; WB.

SEQUENCE

```
ITTCLA LGTRRMAKKN AIVRSLPSVE TLGCTSVICS
DKTGTLTTNQ MSVCRMFILD RVEGDTCSLN EFTITGSTYA PIGEVHKDDK
PVNCHQYDGL VELATICALC NDSALDYNEA KGVYEKVGEA TETALTCLVE
KMNVFDTELK GLSKIERANA CNSVIKQLMK KEFTLEFSRD RKSMSVYCTP
NKPSRTSMK MFVKGAPEGV IDRCTHIRVG STKVPMTSGV KQKIMSVIRE
WGSGSDLRC LALATHDNPL RREEMHLED ANFIKYETNL TFGCVGMLD
PPRIEVASSV KLCRQAGIRV IMITGDNKGT AVAICRRIGI FGQDEDVTSK
AFTGREFDEL NPSAQRDA CL NARCFARVEP SHKSKIVEFL QSFDEITAMT
GDGVNDAPAL KKAIEIGIAMG SGTAVAKTAS EMVLADDNFS TIVAAVEEGR
AIYNNM
```

USAGE

Reconstitute in ddH₂O to a concentration of 0.1-1.0 mg/mL. Do not vortex.

STORAGE

Avoid repeated freeze/thaw cycles. Store at 2-8°C for one month. Aliquot and store at -80°C for 12 months.

STABILITY

The thermal stability is described by the loss rate. The loss rate was determined by accelerated thermal degradation test, that is, incubate the protein at 37°C for 48h, and no obvious degradation and precipitation were observed. The loss rate is less than 5% within the expiration date under appropriate storage condition.

Image

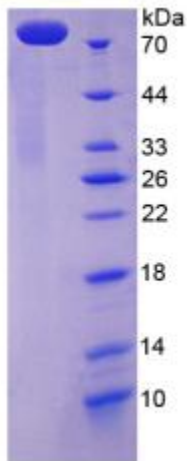


Figure. SDS-PAGE

[IMPORTANT NOTE]

The kit is designed for research use only, we will not be responsible for any issue if the kit was used in clinical diagnostic or any other procedures.