

Recombinant Cysteine Rich Protein, Angiogenic Inducer 61 (CYR61) Instruction Manual

SIPG362Hu01

Homo sapiens (Human)

Source	Prokaryotic expression
Host	E.coli
Endotoxin Level	<1.0EU per 1µg (determined by the LAL method)
Subcellular Location	Secreted
Predicted Molecular Mass	26.9kDa
Accurate Molecular Mass	27kDa(Analysis of differences refer to the manual)
Residues & Tags	Leu178~Asp381 with N-terminal His Tag
Buffer Formulation	100mMNaHCO ₃ , 500mMNaCl, pH8.3, containing 0.01% SKL, 5% Trehalose.
Traits	Freeze-dried powder
Purity	> 90%
Isoelectric Point	9.4
Applications	Positive Control; Immunogen; SDS-PAGE; WB.

SEQUENCE

```
LLG KELGFDASEV ELTRNNELIA  
VGKGSLLKRL PVFGMEPRIL YNPLQGQKCI VQTTSSWSQCS KTCGTGISTR  
VTNDNPECL VKETRIQEV PCGQPVYSSL KKGKKCSKTK KSPEPVRFTY  
AGCLSVKKYR PKYCGSCVDG RCCTPQLTRT VKMRFRCEGD ETFSKNVMMI  
QSCKCNYNCP HANEAAPFY RLFNDIHKFR D
```

USAGE

Reconstitute in ddH₂O to a concentration of 0.1-1.0 mg/mL. Do not vortex.

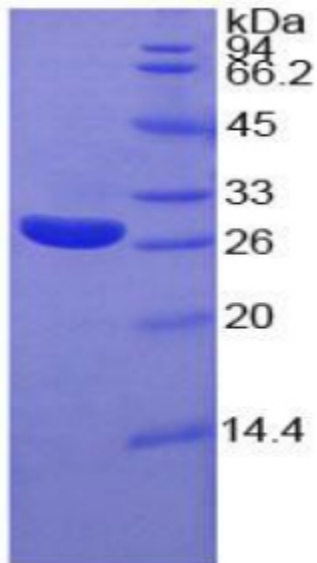
STORAGE

Avoid repeated freeze/thaw cycles. Store at 2-8°C for one month. Aliquot and store at -80°C for 12 months.

STABILITY

The thermal stability is described by the loss rate. The loss rate was determined by accelerated thermal degradation test, that is, incubate the protein at 37°C for 48h, and no obvious degradation and precipitation were observed. The loss rate is less than 5% within the expiration date under appropriate storage condition.

Image



15% SDS-PAGE

SDS-PAGE Image

[IMPORTANT NOTE]

The kit is designed for research use only, we will not be responsible for any issue if the kit was used in clinical diagnostic or any other procedures.