

Recombinant Ubiquilin 4 (UBQLN4)

Instruction Manual

SIPG487Hu01

Homo sapiens (Human)

Source	Prokaryotic expression
Host	E.coli
Endotoxin Level	<1.0EU per 1µg (determined by the LAL method)
Subcellular Location	Nucleus, Cytoplasm, Chromosome
Predicted Molecular Mass	67.6kDa
Accurate Molecular Mass	69kDa(Analysis of differences refer to the manual)
Residues & Tags	Met1~Ser601 with N-terminal His Tag
Buffer Formulation	20mM Tris, 150mM NaCl, pH8.0, containing 1mM EDTA, 1mM DTT, 0.01% SKL, 5% Trehalose and Proclin300.
Traits	Freeze-dried powder
Purity	> 80%
Isoelectric Point	4.9
Applications	Positive Control; Immunogen; SDS-PAGE; WB.

SEQUENCE

MAEPSGAETR PPIRVTVKTP KDKEEIVICD RASVKEFKEE ISRRFKAQQD
QLVLIFAGKI LKGDGTLNQH GIKDGLTVHL VIKTPQKAQD PAAATASSPS
TPDPASAPST TPASAPATPAQ PSTSGSASSD AGSGSRRSSG GGPSPGAGEG
SPSATASILS GFGGILGLGS LGLGSANFME LQQQMQRQLM SNPEMLSQIM
ENPLVQDMMS NPDLMRHMIM ANPQMQLME RNPEISHMLN NPELMRQTME
LARNPAMMQE MMRNQDRALS NLESIPGGYN ALRRMYTDIQ EPMFSAAREQ
FGNNPFSSLA GNSDSSSSQP LRTENREPLP NPWSPSPPTS QAPGSGGEGT
GGSGTSQVHP TVSNPFGINA ASLGSGMFNS PEMQALLQOI SENPQLMQNV
ISAPYMRSMM QTLAQNPDA AQMMVNVPLF AGNPQLQEQL RLQLPVFLQQ
MQNPESLSIL TNPRAMQALL QIQQGLQTLQ TEAPGLVPSL GSGGISRTPA
PSAGSNAGST PEAPTSSPAT PATSSPTGAS SAQQQLMQQM IQLLAGSGNS
QVQTPEVRFQ QQLEQLNSMG FINREANLQA LIATGGDINA AIERLLGSQ
S

USAGE

Reconstitute in 20mM Tris, 150mM NaCl (pH8.0) to a concentration of 0.1-1.0 mg/mL. Do not vortex.

STORAGE

Avoid repeated freeze/thaw cycles. Store at 2-8°C for one month. Aliquot and store at -80°C for 12 months.

STABILITY

The thermal stability is described by the loss rate. The loss rate was determined by accelerated thermal degradation test, that is, incubate the protein at 37°C for 48h, and no obvious degradation and precipitation were observed. The loss rate is less than 5% within the expiration date under appropriate storage condition.

Image

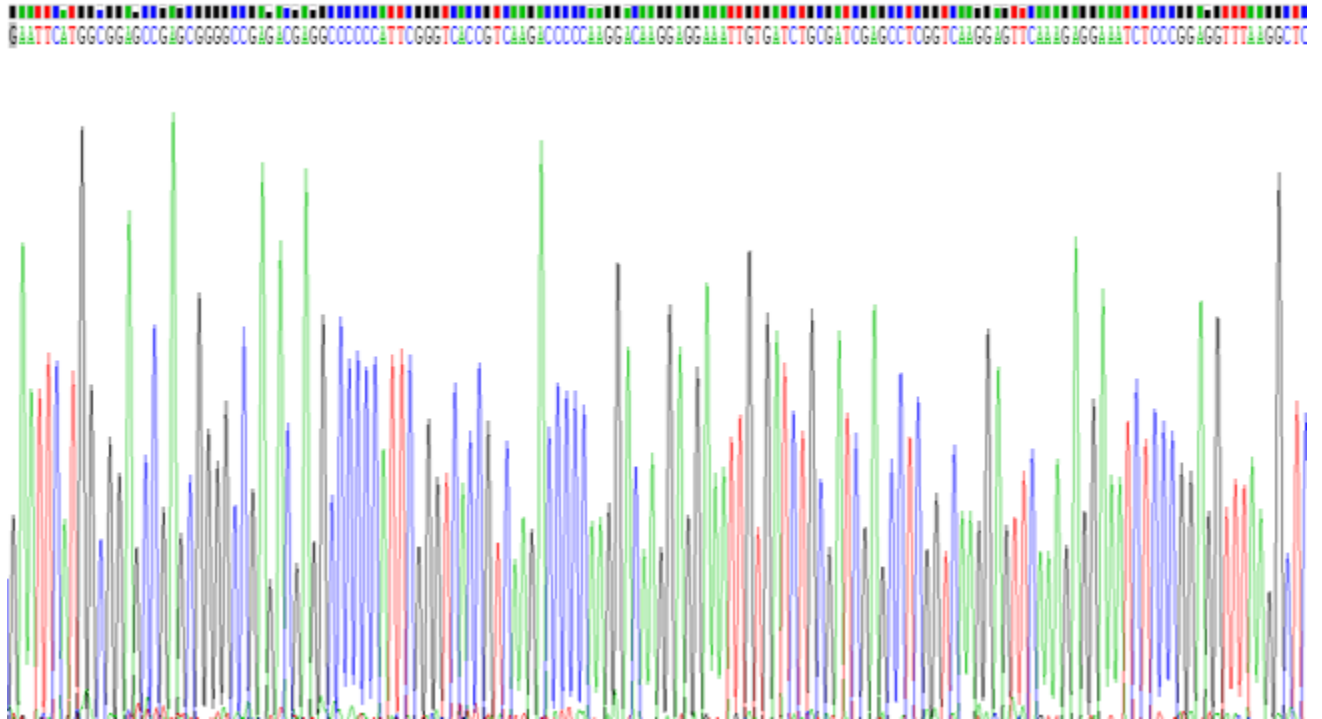


Figure. SDS-PAGE

[IMPORTANT NOTE]

The kit is designed for research use only, we will not be responsible for any issue if the kit was used in clinical diagnostic or any other procedures.