

Recombinant Cysteine Conjugate Beta Lyase 2 (CCbL2) Instruction Manual

SIPG516Ra01

Rattus norvegicus (Rat)

Source	Prokaryotic expression
Host	E.coli
Endotoxin Level	<1.0EU per 1µg (determined by the LAL method)
Subcellular Location	Cytoplasm
Predicted Molecular Mass	54.7kDa
Accurate Molecular Mass	55kDa(Analysis of differences refer to the manual)
Residues & Tags	Met1~Ser454 with N-terminal His Tag
Buffer Formulation	20mM Tris, 150mM NaCl, pH8.0, containing 1mM EDTA, 1mM DTT, 0.01% SKL, 5% Trehalose and Proclin300.
Traits	Freeze-dried powder
Purity	> 90%
Isoelectric Point	8.6
Applications	Positive Control; Immunogen; SDS-PAGE; WB.

SEQUENCE

```
MLLAQRRLFS LGCRAKPIKT IYSSKVLGLS TSAKMALRFK NAKRIEGLDQ  
NVWVEFTKLA ADPSVVNLGQ GFPDITLPSY VQEELSKAAF IDNLNQYTRG  
FGHPSLVKAL SCLYGKIYQK QIDPNEEILV TVGGYGSLFN AIQGLVDPGD  
EVIIMVPFYD CYEPMVKMAG AVPVFIPLRS KRTDGMKWTS SDWTFNPQEL  
ESKFSSKTKA IILNTPHNPI GKVYTREELQ VIADLCIKHD TLCISDEVYE  
WLVYTGHKHI KVASLPGMWD RTLTIGSAGK TFSVTGWKLG WSIGPGHLIK  
HLRTVQQTSV YTCATPLQAA LAEAFWIDIK RMDDPECYFN SLPKELEVKR  
DRMACLLNSV GLKPIIPDGG YFIIADVSSL GVDLSDVKSD EPYDYKFVKW  
MTKNKLSAI PVSAFCDESE KPHFEKLVRF CFIKKDSTLD AEEEIFRTWN  
SRKS
```

USAGE

Reconstitute in 20mM Tris, 150mM NaCl (pH8.0) to a concentration of 0.1-1.0 mg/mL. Do not vortex.

STORAGE

Avoid repeated freeze/thaw cycles. Store at 2-8°C for one month. Aliquot and store at -80°C for 12 months.

STABILITY

The thermal stability is described by the loss rate. The loss rate was determined by accelerated thermal degradation test, that is, incubate the protein at 37°C for 48h, and no obvious degradation and precipitation were observed. The loss rate is less than 5% within the expiration date under appropriate storage condition.

Image

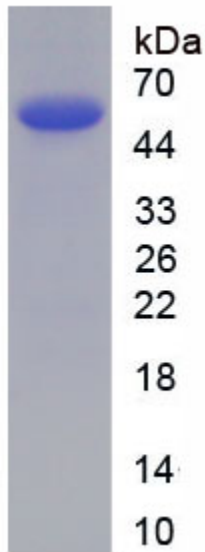


Figure. SDS-PAGE

[IMPORTANT NOTE]

The kit is designed for research use only, we will not be responsible for any issue if the kit was used in clinical diagnostic or any other procedures.

