

Recombinant Proteasome 26S Subunit, ATPase 2 (PSMC2) Instruction Manual

SIPG613Hu01

Homo sapiens (Human)

Source	Prokaryotic expression
Host	E.coli
Endotoxin Level	<1.0EU per 1µg (determined by the LAL method)
Subcellular Location	Cytoplasm
Predicted Molecular Mass	52.3kDa
Accurate Molecular Mass	52kDa(Analysis of differences refer to the manual)
Residues & Tags	Met1~Asn433 with N-terminal His Tag
Buffer Formulation	PBS, pH7.4, containing 0.01% SKL, 5% Trehalose.
Traits	Freeze-dried powder
Purity	> 97%
Isoelectric Point	6.3
Applications	Positive Control; Immunogen; SDS-PAGE; WB.

SEQUENCE

```
MPDYLGADQR KTKEDKDDK PIRALDEGDI ALLKTYGQST YSRQIKQVED  
DIQQLLKKIN ELTGIKESDT GLAPPALWDL AADKQTLQSE QPLQVARCTK  
IINADSEDPK YIINVKQFAK FVVDLSDQVA PTDIEEGMRV GVDRNKYQIH  
IPLPPKIDPT VTMMQVEEKP DVTYSDVGGC KEQIEKLREV VETPLLHPER  
FVNLGIIEPK GVLLFGPPGT GKTLCARAVA NRTDACFIRV IGSELVQKYV  
GEGARMVREL FEMARTKKAC LIFFDEIDAI GGARFDDGAG GDNEVQRTML  
ELINQLDGFDP RGNIKVLMA TNRPDTLPA LMRPGRDRK IEFSLPDLEG  
RTHIFKIHAR SMSVERDIRF ELLARLCPNS TGAEIRSVCT EAGMFAIRAR  
RKIATEKDFL EAVNKVIKSY AKFSATPRYM TYN
```

USAGE

Reconstitute in 10mM PBS (pH7.4) to a concentration of 0.1-1.0 mg/mL. Do not vortex.

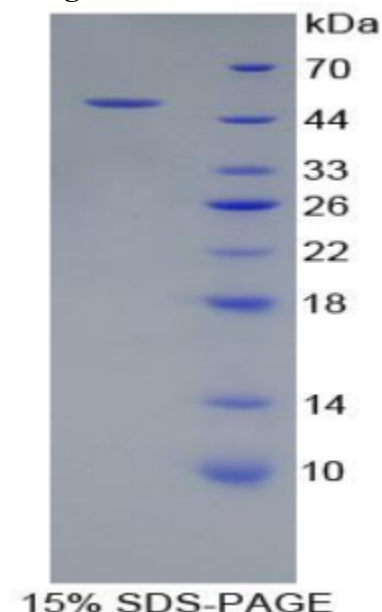
STORAGE

Avoid repeated freeze/thaw cycles. Store at 2-8°C for one month. Aliquot and store at -80°C for 12 months.

STABILITY

The thermal stability is described by the loss rate. The loss rate was determined by accelerated thermal degradation test, that is, incubate the protein at 37°C for 48h, and no obvious degradation and precipitation were observed. The loss rate is less than 5% within the expiration date under appropriate storage condition.

Image



15% SDS-PAGE
Figure. SDS-PAGE

[IMPORTANT NOTE]

The kit is designed for research use only, we will not be responsible for any issue if the kit was used in clinical diagnostic or any other procedures.