

Recombinant ATPase, H⁺ Transporting, Mitochondrial F1 Complex Beta Polypeptide (ATP5b) Instruction Manual

SIPG615Ra01

Rattus norvegicus (Rat)

Source	Prokaryotic expression
Host	E.coli
Endotoxin Level	<1.0EU per 1µg (determined by the LAL method)
Subcellular Location	Secreted
Predicted Molecular Mass	55.4kDa
Accurate Molecular Mass	55kDa(Analysis of differences refer to the manual)
Residues & Tags	Ala47~Ser529 with N-terminal His Tag
Buffer Formulation	PBS, pH7.4, containing 0.01% SKL, 1mM DTT, 5% Trehalose and Proclin300.
Traits	Freeze-dried powder
Purity	> 97%
Isoelectric Point	5.0
Applications	Positive Control; Immunogen; SDS-PAGE; WB.

SEQUENCE

AAQS
SAAPKAGTAT GQIVAVIGAV VDVQFDEGLP PILNALEVQG RESRLVLEVA
QHLGESTVRT IAMDGTEGLV RGQKVLDSGA PIKIPVGPET LGRIMNVIGE
PIDERGPIKT KQFAPIHAEA PEFIEMSVEQ EILVTGIKVV DLLAPYAKGG
KIGLFGGAGV GKTVLIMELI NNVAKAHGGY SVFAGVGERT REGNDLYHEM
IESGVINLKD ATSKVALVYG QMNEPPGARA RVALTGLTVA EYFRDQEGQD
VLLFIDNIFR FTQAGSEVSA LLGRIPSAVG YQPTLATDMG TMQERITTTK
KGSITSVQAI YVPADDLTDP APATTF AHLD ATTVLSRAIA ELGIYPAVDP
LDSTSRIMDP NIVGSEHYDV ARGVQKILQD YKSLQDIIAI LGMDELSEED
KLTVSRARKI QRFLSQPFQV AEVFTGHMGK LVPLKETIKG FQQILAGDYD
HLPEQAFYMV GPIEEAVAKA DKLAEEHGS

USAGE

Reconstitute in 10mM PBS (pH7.4) to a concentration of 0.1-1.0 mg/mL. Do not vortex.

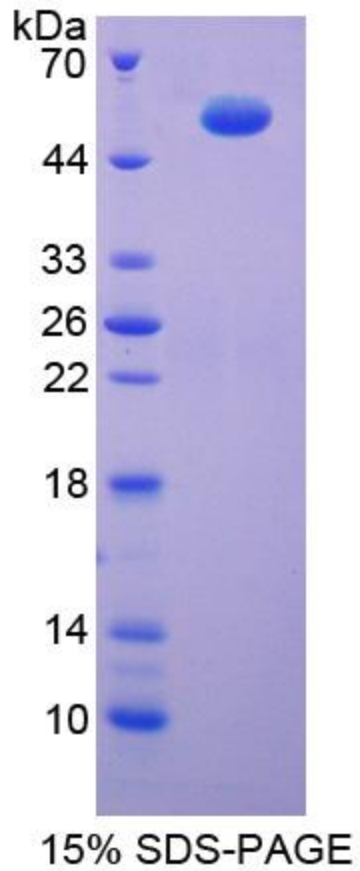
STORAGE

Avoid repeated freeze/thaw cycles. Store at 2-8°C for one month. Aliquot and store at -80°C for 12 months.

STABILITY

The thermal stability is described by the loss rate. The loss rate was determined by accelerated thermal degradation test, that is, incubate the protein at 37°C for 48h, and no obvious degradation and precipitation were observed. The loss rate is less than 5% within the expiration date under appropriate storage condition.

Image



SDS-PAGE Image

[IMPORTANT NOTE]

The kit is designed for research use only, we will not be responsible for any issue if the kit was used in clinical diagnostic or any other procedures.