

Recombinant Proteasome 26S Subunit, ATPase 4 (PSMC4) Instruction Manual

SIPG670Hu01

Homo sapiens (Human)

Source	Prokaryotic expression
Host	E.coli
Endotoxin Level	<1.0EU per 1µg (determined by the LAL method)
Subcellular Location	Nucleus, Cytoplasm
Predicted Molecular Mass	51.0kDa
Accurate Molecular Mass	51kDa(Analysis of differences refer to the manual)
Residues & Tags	Met1~Lys418 with N-terminal His Tag
Buffer Formulation	20mM Tris, 150mM NaCl, pH8.0, containing 1mM EDTA, 1mM DTT, 0.01% SKL, 5% Trehalose and Proclin300.
Traits	Freeze-dried powder
Purity	> 90%
Isoelectric Point	5.5
Applications	Positive Control; Immunogen; SDS-PAGE; WB.

SEQUENCE

MEEIGILVEK AQDEIPALSV SRPQTGLSFL GPEPEDLEDL YSRYKKLQQE
LEFLEVQEEY IKDEQKNLKK EFLHAQEEVK RIQSIPLVIG QFLEAVDQNT
AIVGSTTGSN YYVRILSTID RELLKPNASV ALHKHSNALV DVLPPPEADSS
IMMLTSDQKP DVMYADIGGM DIQKQEVREA VELPLTHFEL YKQIGIDPPR
GVLMYGPPGC GKTMLAKAVA HHTTAAFIRV VGSEFVQKYL GEGPRMVRDV
FRLAKENAPA IIFIDEIDAI ATKRFDAQTG ADREVQRILL ELLNQMDGFD
QNVNVKVIMA TNRADTLDPA LLRPGRDRK IEFPLPDRRQ KRLIFSTITS
KMNLSEEVDL EDYVARPDKI SGADINSICQ ESGMLAVREN RYIVLAKDFE
KAYKTVIKKD EQEHEFYK

USAGE

Reconstitute in 20mM Tris, 150mM NaCl (pH8.0) to a concentration of 0.1-1.0 mg/mL.
Do not vortex.

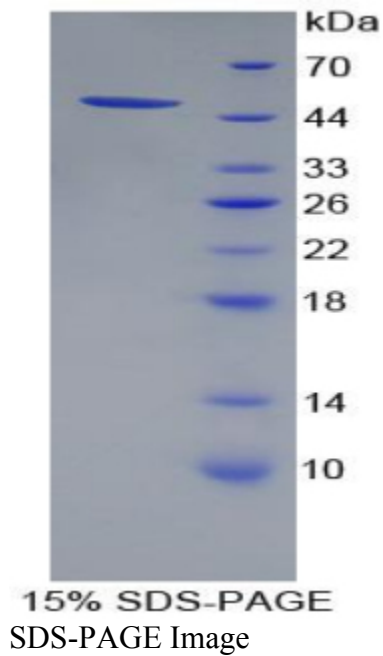
STORAGE

Avoid repeated freeze/thaw cycles. Store at 2-8°C for one month. Aliquot and store at -80°C for 12 months.

STABILITY

The thermal stability is described by the loss rate. The loss rate was determined by accelerated thermal degradation test, that is, incubate the protein at 37°C for 48h, and no obvious degradation and precipitation were observed. The loss rate is less than 5% within the expiration date under appropriate storage condition.

Image



[IMPORTANT NOTE]

The kit is designed for research use only, we will not be responsible for any issue if the kit was used in clinical diagnostic or any other procedures.