

Recombinant Proteasome 26S Subunit, ATPase 6 (PSMC6) Instruction Manual

SIPG722Hu01

Homo sapiens (Human)

Source	Prokaryotic expression
Host	E.coli
Endotoxin Level	<1.0EU per 1µg (determined by the LAL method)
Subcellular Location	Nucleus, Cytoplasm, Chromosome
Predicted Molecular Mass	49.3kDa
Accurate Molecular Mass	46kDa(Analysis of differences refer to the manual)
Residues & Tags	Ala2~Val403 with N-terminal His Tag
Buffer Formulation	PBS, pH7.4, containing 0.01% SKL, 1mM DTT, 5% Trehalose and Proclin300.
Traits	Freeze-dried powder
Purity	> 90%
Isoelectric Point	8.1
Applications	Positive Control; Immunogen; SDS-PAGE; WB.

SEQUENCE

```
AIPGIPYER RLLIMADPRD KALQDYRKKL LEHKEIDGRL KELREQLKEL  
TKQYEKSEND LKALQSVGQI VGEVLKQLTE EKFIKATNG PRYVVGRRQ  
LDKSKLKPGT RVALDMTTLT IMRYLPREVD PLVYNMSHED PGNVSYSEIG  
GLSEQIRELR EVIELPLTNP ELFQRVGIIP PKGCLLYGPP GTGKTLLARA  
VASQLDCNFL KVVSSSIVDK YIGESARLIR EMFNARDHQ PCIIFMDEID  
AIGRRFSEG TSADREIQR TLMELLNQMDG FDTLHRVKMI MATNRPDTLD  
PALLRPGRLD RKIHIDLPNE QARLDILKIH AGPITKHGEI DYEAIVKLSD  
GFNGADLRNV CTEAGMFAIR ADHDFVVQED FMKAVRKVAD SKKLESKLDY  
KPV
```

USAGE

Reconstitute in 10mM PBS (pH7.4) to a concentration of 0.1-1.0 mg/mL. Do not vortex.

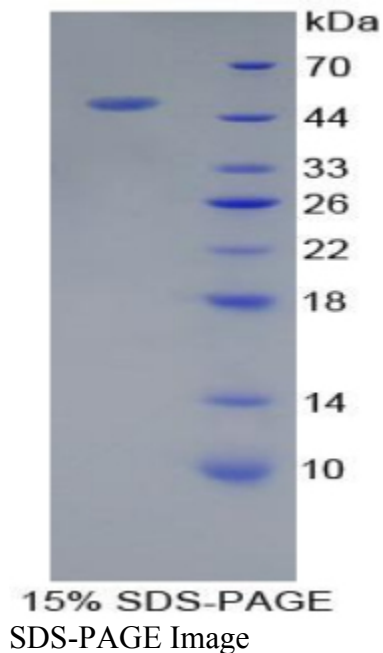
STORAGE

Avoid repeated freeze/thaw cycles. Store at 2-8°C for one month. Aliquot and store at -80°C for 12 months.

STABILITY

The thermal stability is described by the loss rate. The loss rate was determined by accelerated thermal degradation test, that is, incubate the protein at 37°C for 48h, and no obvious degradation and precipitation were observed. The loss rate is less than 5% within the expiration date under appropriate storage condition.

Image



[IMPORTANT NOTE]

The kit is designed for research use only, we will not be responsible for any issue if the kit was used in clinical diagnostic or any other procedures.