

Recombinant WNT1 Inducible Signaling Pathway Protein 2 (WISP2) Instruction Manual

SIPG986Ra01

Rattus norvegicus (Rat)

Source	Prokaryotic expression
Host	E.coli
Endotoxin Level	<1.0EU per 1µg (determined by the LAL method)
Subcellular Location	Secreted
Predicted Molecular Mass	55.4kDa
Accurate Molecular Mass	55kDa(Analysis of differences refer to the manual)
Residues & Tags	Leu15~Phe250 with N-terminal His and GST Tag
Buffer Formulation	100mMNaHCO ₃ , 500mMNaCl, pH8.3, containing 1mM EDTA, 1mM DTT, 0.01% SKL, 5% Trehalose and Proclin300.
Traits	Freeze-dried powder
Purity	> 97%
Isoelectric Point	6.6
Applications	Positive Control; Immunogen; SDS-PAGE; WB.

SEQUENCE

```
LCLLSM VCAQLCRTPC TCPWTPPQCP QGVPLVLDGC  
GCCKVCARRL TESCEHLHVC EPSQGLVCQP GAGPGGHGAV CLLDEDDGDC  
EVNGRRYLDG ETFKPNCRVL CRCDDGGFTC LPLCSEDVTL PSWDCPRPKR  
IQVPGKCCPE WVCDDQGVTPA IQRSAAQGHQ LSALVTPASA DAPWPNWSTA  
WGPCSTTCGL GIATRVSNQN RFCQLEIQRR LCLPRPCLAA RSHSSWNSAF
```

USAGE

Reconstitute in 100mM NaHCO₃, 500mM NaCl (pH8.3) to a concentration of 0.1-1.0 mg/mL. Do not vortex.

STORAGE

Avoid repeated freeze/thaw cycles. Store at 2-8°C for one month. Aliquot and store at -80°C for 12 months.

STABILITY

The thermal stability is described by the loss rate. The loss rate was determined by accelerated thermal degradation test, that is, incubate the protein at 37°C for 48h, and no obvious degradation and precipitation were observed. The loss rate is less than 5% within the expiration date under appropriate storage condition.

Image

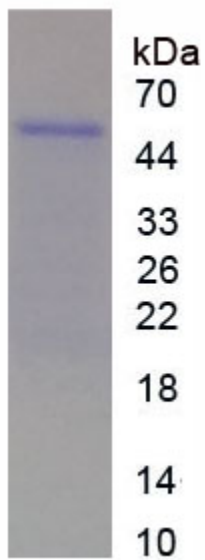


Figure. SDS-PAGE

[IMPORTANT NOTE]

The kit is designed for research use only, we will not be responsible for any issue if the kit was used in clinical diagnostic or any other procedures.