

Recombinant Immunoglobulin Superfamily Containing Leucine Rich Repeat Protein (ISLR) Instruction Manual

SIPH173Hu01

Homo sapiens (Human)

Source	Prokaryotic expression
Host	E.coli
Endotoxin Level	<1.0EU per 1µg (determined by the LAL method)
Subcellular Location	Secreted
Predicted Molecular Mass	47.6kDa
Accurate Molecular Mass	48kDa(Analysis of differences refer to the manual)
Residues & Tags	Cys19~Phe428 with N-terminal His Tag
Buffer Formulation	PBS, pH7.4, containing 0.01% SKL, 1mM DTT, 5% Trehalose and Proclin300.
Traits	Freeze-dried powder
Purity	> 90%
Isoelectric Point	5.0
Applications	Positive Control; Immunogen; SDS-PAGE; WB.

SEQUENCE

```
CP EPCDCGEKYG FQIADCAYRD LESVPPGFPA  
NVTTLSSLN RLPGLPEGAF REVPLLQSLW LAHNEIRTVA AGALASLSHL  
KSLDLSHNL SDFAWSDLHN LSALQLLKMD SNELTFIPRD AFRSLRALRS  
LQLNHNRLHT LAEGTFTPLT ALSHLQINEN PFDCTCGIVW LKTWALTTAV  
SIPEQDNIAC TSPHVLKGTG LSRLPPLPCS APSVQLSYQP SQDGAELRPG  
FVLALHCDVD GQPAPQLHWH IQIPSGIVEI TSPNVGTDGR ALPGTPVASS  
QPRFQAFANG SLLIPDFGKL EEGTYSCLAT NELGSAESSV DVALATPGEG  
GEDTLGRRFH GKAVEGKGCY TVDNEVQPSG PEDNVVVIYL SRAGNPEAAV  
AEGVPGQLPP GLLLLGQSL LFFFLTST
```

USAGE

Reconstitute in 10mM PBS (pH7.4) to a concentration of 0.1-1.0 mg/mL. Do not vortex.

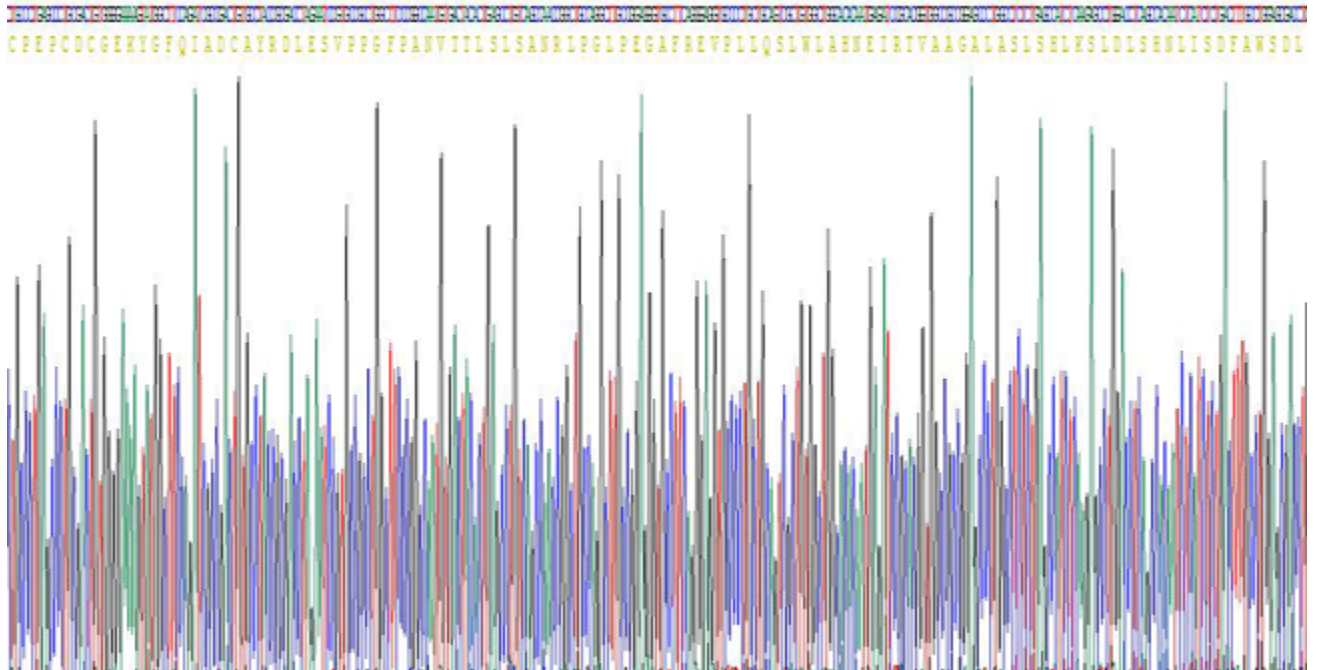
STORAGE

Avoid repeated freeze/thaw cycles. Store at 2-8°C for one month. Aliquot and store at -80°C for 12 months.

STABILITY

The thermal stability is described by the loss rate. The loss rate was determined by accelerated thermal degradation test, that is, incubate the protein at 37°C for 48h, and no obvious degradation and precipitation were observed. The loss rate is less than 5% within the expiration date under appropriate storage condition.

Image



SDS-PAGE Image

[IMPORTANT NOTE]

The kit is designed for research use only, we will not be responsible for any issue if the kit was used in clinical diagnostic or any other procedures.

