

# Recombinant Metal Response Element Binding Transcription Factor 2 (MTF2) Instruction Manual

**SIPH366Hu01**

**Homo sapiens (Human)**

<b>Source</b>	Prokaryotic expression
<b>Host</b>	E.coli
<b>Endotoxin Level</b>	<1.0EU per 1µg (determined by the LAL method)
<b>Subcellular Location</b>	Nucleus
<b>Predicted Molecular Mass</b>	97.1kDa
<b>Accurate Molecular Mass</b>	97kDa(Analysis of differences refer to the manual)
<b>Residues &amp; Tags</b>	Met1~Ser593 with N-terminal His and GST Tag
<b>Buffer Formulation</b>	20mM Tris, 150mM NaCl, pH8.0, containing 1mM EDTA, 1mM DTT, 0.01% SKL, 5% Trehalose and Proclin300.
<b>Traits</b>	Freeze-dried powder
<b>Purity</b>	> 95%
<b>Isoelectric Point</b>	9.0
<b>Applications</b>	Positive Control; Immunogen; SDS-PAGE; WB.

## SEQUENCE

```
MRDSTGAGNS LVHKRSPLRR NQKTPTSLTK LSLQDGHKAK KPACKFEEGQ  
DVLARWSDGL FYLGTIKKIN ILKQSCFIIF EDSSKSWVLW KDIQTGATGS  
GEMVCTICQE EYSEAPNEMV ICDKCGQGYH QLCHTPHIDC SVIDSDEKWL  
CRQCVFATTT KRGGALKKGP NAKALQVMKQ TLPYSVADLE WDAGHKTNVQ  
QCYCYCGGPG DWYLKMLQCC KCKQWFHEAC VQCLQKPLMF GDRFYTFICS  
VCSSGPEYLK RLPLQWVDIA HLCLYNLSVI HKKKYFDSEL ELMTYINENW  
DRLHPGELAD TPKSERYEHV LEALNDYKTM FMSGKEIKKK KHLFGLRIRV  
PPVPPNVAFK AEKEPEGTSH EFKIKGRKAS KPISDSREVS NGIEKKGKKK  
SVGRPPGPYT RKMIQKTAEP LLDKESISEN PTLDLPCSIG RTEGTAHSSN  
TSDVDFTGAS SAKETTSSSI SRHYGLSDSR KRTRTGRSWP AAIPHLRRRR  
GRLPRRALQT QNSEIVKDDE GKEDYQFDEL NTEILNNLAD QELQLNHLKN  
SITSYFGAAG RIACGEKYRV LARRVTLDGK VQYLVEWEGA TAS
```

## USAGE

Reconstitute in 20mM Tris, 150mM NaCl (pH8.0) to a concentration of 0.1-1.0 mg/mL. Do not vortex.

## STORAGE

Avoid repeated freeze/thaw cycles. Store at 2-8°C for one month. Aliquot and store at -80°C for 12 months.

## STABILITY

The thermal stability is described by the loss rate. The loss rate was determined by accelerated thermal degradation test, that is, incubate the protein at 37°C for 48h, and no obvious degradation and precipitation were observed. The loss rate is less than 5% within the expiration date under appropriate storage condition.

## Image

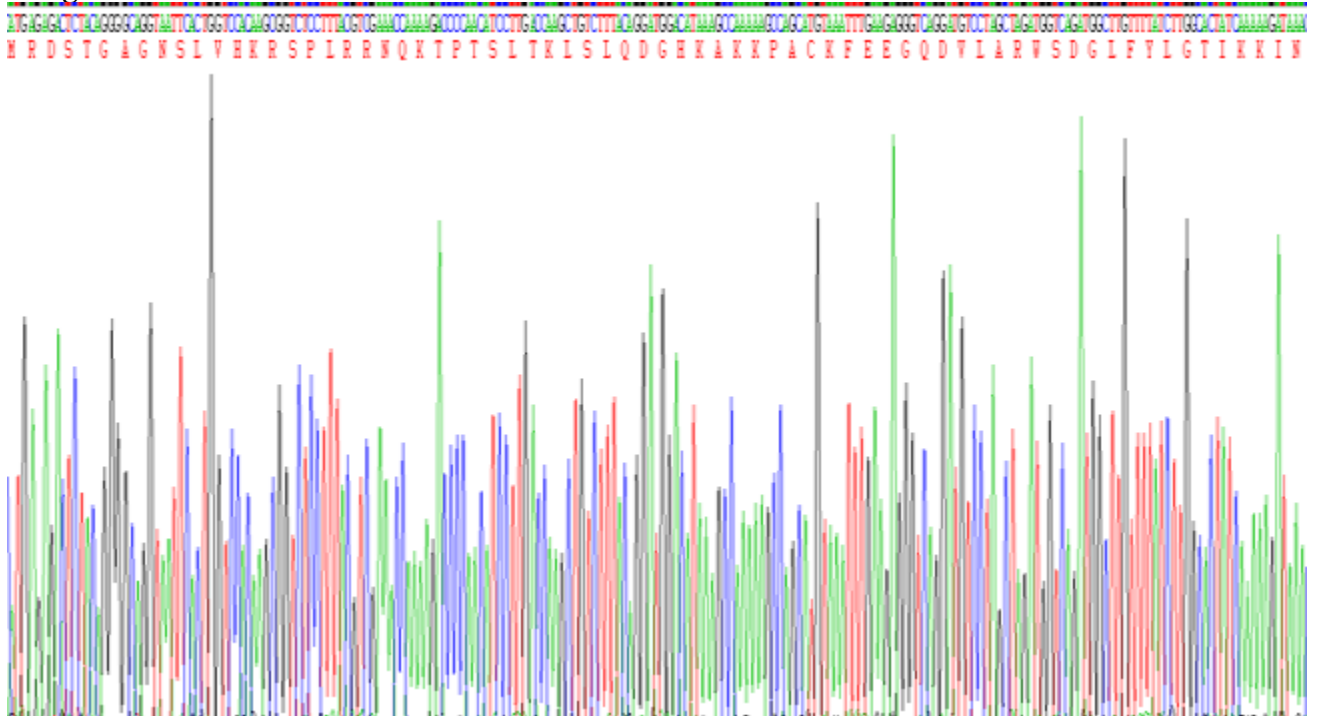


Figure. SDS-PAGE

**[IMPORTANT NOTE]**

The kit is designed for research use only, we will not be responsible for any issue if the kit was used in clinical diagnostic or any other procedures.