

Recombinant Iron Responsive Element Binding Protein 2 (IREB2) Instruction Manual

SIPH628Ra01

Rattus norvegicus (Rat)

| | |
|---------------------------------|---|
| Source | Prokaryotic expression |
| Host | E.coli |
| Endotoxin Level | <1.0EU per 1µg (determined by the LAL method) |
| Subcellular Location | Cytoplasm |
| Predicted Molecular Mass | 40.9kDa |
| Accurate Molecular Mass | 41kDa(Analysis of differences refer to the manual) |
| Residues & Tags | Met1~His343 with N-terminal His Tag |
| Buffer Formulation | 100mMNaHCO ₃ , 500mMNaCl, pH8.3, containing 1mM EDTA, 1mM DTT, 0.01% SKL, 5% Trehalose and Proclin300. |
| Traits | Freeze-dried powder |
| Purity | > 95% |
| Isoelectric Point | 5.9 |
| Applications | Positive Control; Immunogen; SDS-PAGE; WB. |

SEQUENCE

```
MDSPSAGYTF EYLIETLNGS SQKKFFNVPK LGGTKYDILP YSIRVLLEAA  
VRNCDGFLMK KEDVINILDW KTKQSNVEVP FFPARVVLQD FTGIPAMVDF  
AAMREAVKTL GGDPPKVVHPA CPTDLTVDHS LQIDFSKCAI QNAPNPGGGD  
LQKAGKLSPL KVQPKKPCR GQTTCRGSCD SGELSRNSGT FSSQIENTPV  
LCPFHLQVPV EPETVLKNQE VEFGRNRERL QFFKWSSGAF KNAVAVIPPGT  
GMAHQVNLEH LSRVVFEEAD LLFPDSVIGT DSHITMVNGL GILGWGVGGI  
ETEAVMLGLP VTLTLPEVVG CELTGSSNAF VTSIDIVLGI TKH
```

USAGE

Reconstitute in 100mM NaHCO₃, 500mM NaCl (pH8.3) to a concentration of 0.1-1.0 mg/mL. Do not vortex.

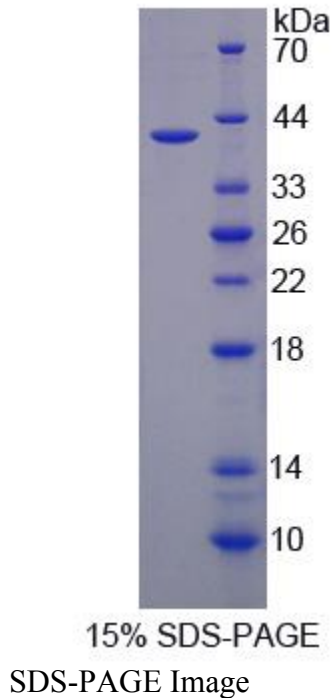
STORAGE

Avoid repeated freeze/thaw cycles. Store at 2-8°C for one month. Aliquot and store at -80°C for 12 months.

STABILITY

The thermal stability is described by the loss rate. The loss rate was determined by accelerated thermal degradation test, that is, incubate the protein at 37°C for 48h, and no obvious degradation and precipitation were observed. The loss rate is less than 5% within the expiration date under appropriate storage condition.

Image



[IMPORTANT NOTE]

The kit is designed for research use only, we will not be responsible for any issue if the kit was used in clinical diagnostic or any other procedures.

