

Recombinant Mesothelin (MSLN) Instruction Manual

SIPH665Mu01

Mus musculus (Mouse)

Source	Prokaryotic expression
Host	E.coli
Endotoxin Level	<1.0EU per 1µg (determined by the LAL method)
Subcellular Location	Membrane
Predicted Molecular Mass	52.7kDa
Accurate Molecular Mass	53kDa(Analysis of differences refer to the manual)
Residues & Tags	Pro345~Asn548 with N-terminal His and GST Tag
Buffer Formulation	PBS, pH7.4, containing 0.01% SKL, 5% Trehalose.
Traits	Freeze-dried powder
Purity	> 95%
Isoelectric Point	6.7
Applications	Positive Control; Immunogen; SDS-PAGE; WB.

SEQUENCE

PDTVKTL

LKVS KGQKMN AQAIALVACY LRG GQLDED MVKALGDIPL SYLCDFSPQD
LHVPSSVMW LVGPQDLDKC SQRHLG LLYQ KACSAFQNV S GLEYFEKIKT
FLGGASVKDL RALSQHNVSM DIATFKRLQV DSLVGLSVAE VQKLLGPN

USAGE

Reconstitute in 10mM PBS (pH7.4) to a concentration of 0.1-1.0 mg/mL. Do not vortex.

STORAGE

Avoid repeated freeze/thaw cycles. Store at 2-8°C for one month. Aliquot and store at -80°C for 12 months.

STABILITY

The thermal stability is described by the loss rate. The loss rate was determined by accelerated thermal degradation test, that is, incubate the protein at 37°C for 48h, and no obvious degradation and precipitation were observed. The loss rate is less than 5% within the expiration date under appropriate storage condition.

Image

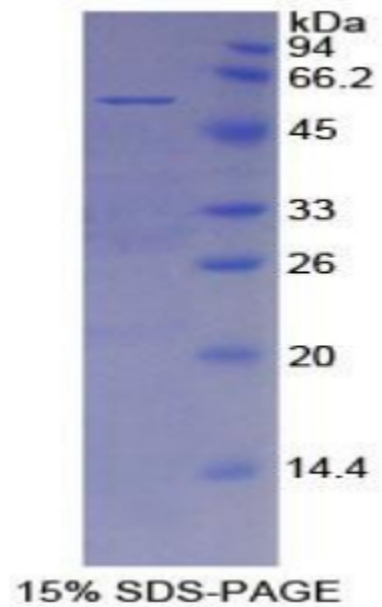


Figure. SDS-PAGE

[IMPORTANT NOTE]

The kit is designed for research use only, we will not be responsible for any issue if the kit was used in clinical diagnostic or any other procedures.