

# Recombinant Serine Palmitoyltransferase, Long Chain Base Subunit 1 (SPTLC1) Instruction Manual

**SIPH667Mu01**

**Mus musculus (Mouse)**

<b>Source</b>	Prokaryotic expression
<b>Host</b>	E.coli
<b>Endotoxin Level</b>	<1.0EU per 1µg (determined by the LAL method)
<b>Subcellular Location</b>	Membrane
<b>Predicted Molecular Mass</b>	40.3kDa
<b>Accurate Molecular Mass</b>	40kDa(Analysis of differences refer to the manual)
<b>Residues &amp; Tags</b>	Asp143~Leu473 with N-terminal His Tag
<b>Buffer Formulation</b>	20mM Tris, 150mM NaCl, pH8.0, containing 1mM EDTA, 1mM DTT, 0.01% SKL, 5% Trehalose and Proclin300.
<b>Traits</b>	Freeze-dried powder
<b>Purity</b>	> 90%
<b>Isoelectric Point</b>	5.8
<b>Applications</b>	Positive Control; Immunogen; SDS-PAGE; WB.

## SEQUENCE

```

                                                                DVHLDLEE
RLAKFMKTEE AIIYSYGFST IASAIPAYSK RGDIIIFVDSA ACFAIQKGLQ
ASRSDIKLFK HNDVADLERL LKEQEIEDQK NPRKARVTRR FIVVEGLYMN
TGTICPLPEL VKLKYKYKAR IFLEESLSFG VLGEHGRGVT EHYGISIDDI
DLISANMENA LASVGGFCCG RSFVVDHQRL SGQGYCFSAS LPPLAAAAAI
EALNIMEENP DIFAVLKKKC QNIHKS LQGV SGLKVVGESL SPALHLQLEE
STGSREKDVK LLQAIVDQCM DKGIALTQAR YLDKEEKCLP PPSIRVVVTV
EQTEEELQRA ASTIREAAQA VLL
```

## USAGE

Reconstitute in 20mM Tris, 150mM NaCl (pH8.0) to a concentration of 0.1-1.0 mg/mL. Do not vortex.

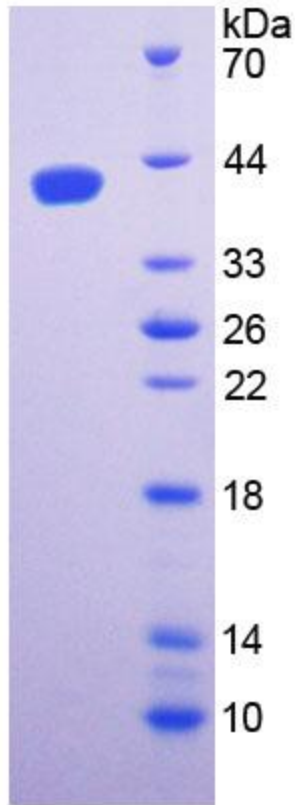
## **STORAGE**

Avoid repeated freeze/thaw cycles. Store at 2-8°C for one month. Aliquot and store at -80°C for 12 months.

## **STABILITY**

The thermal stability is described by the loss rate. The loss rate was determined by accelerated thermal degradation test, that is, incubate the protein at 37°C for 48h, and no obvious degradation and precipitation were observed. The loss rate is less than 5% within the expiration date under appropriate storage condition.

## **Image**



**15% SDS-PAGE**  
SDS-PAGE Image

**[IMPORTANT NOTE]**

The kit is designed for research use only, we will not be responsible for any issue if the kit was used in clinical diagnostic or any other procedures.