

# Recombinant Inhibitor Of Kappa-Light Polypeptide Gene Enhancer In B-Cells Kinase Beta (IκBκb) Instruction Manual

**SIPJ360Hu01**

**Homo sapiens (Human)**

|                                 |   |
|---------------------------------|---|
| <b>Source</b>                   | Prokaryotic expression  |
| <b>Host</b>                     | E.coli  |
| <b>Endotoxin Level</b>          | <1.0EU per 1μg (determined by the LAL method)   |
| <b>Subcellular Location</b>     | Nucleus, Cytoplasm  |
| <b>Predicted Molecular Mass</b> | 62.3kDa   |
| <b>Accurate Molecular Mass</b>  | 62kDa(Analysis of differences refer to the manual)  |
| <b>Residues &amp; Tags</b>      | Asp246~Val528 with N-terminal His and GST Tag   |
| <b>Buffer Formulation</b>       | 20mM Tris, 150mM NaCl, pH8.0, containing 1mM EDTA, 1mM DTT, 0.01% SKL, 5% Trehalose and Proclin300. |
| <b>Traits</b>                   | Freeze-dried powder   |
| <b>Purity</b>                   | > 90%   |
| <b>Isoelectric Point</b>        | 5.4   |
| <b>Applications</b>             | Positive Control; Immunogen; SDS-PAGE; WB.  |

## SEQUENCE

DLNGT  
VKFSSSLPYP>NNLNSVLAERLEKWLQLMLMWHPRQRGTDP TYGPNGCFKA  
LDDILNLKLVHILNMVTGTIHTYPVTEDES LQSLKARIQQ DTGIPEEDQE  
LLQEAGLALI PDKPATQCIS DGKLNIGHTL DMDLVFLFDN SKITYETQIS  
PRPQPESVSC ILQEPKRNLA FFQLRKVWGQ VWHSIQTLKE DCNRLQQGQR  
AAMNLLRNN SCLSKMKNSM ASMSQQLKAK LDFFKTSIQI DLEKYSEQTE  
FGITSDKLLL AWREMEQAVE LCGRENEV

## USAGE

Reconstitute in 20mM Tris, 150mM NaCl (pH8.0) to a concentration of 0.1-1.0 mg/mL.  
Do not vortex.

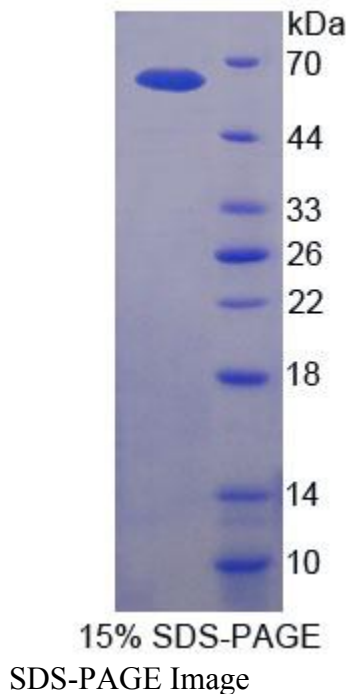
## STORAGE

Avoid repeated freeze/thaw cycles. Store at 2-8°C for one month. Aliquot and store at -80°C for 12 months.

## STABILITY

The thermal stability is described by the loss rate. The loss rate was determined by accelerated thermal degradation test, that is, incubate the protein at 37°C for 48h, and no obvious degradation and precipitation were observed. The loss rate is less than 5% within the expiration date under appropriate storage condition.

## Image



## **[IMPORTANT NOTE]**

The kit is designed for research use only, we will not be responsible for any issue if the kit was used in clinical diagnostic or any other procedures.

