

Recombinant Cartilage Associated Protein (CRTAP) Instruction Manual

SIPJ512Mu01

Mus musculus (Mouse)

Source	Prokaryotic expression
Host	E.coli
Endotoxin Level	<1.0EU per 1µg (determined by the LAL method)
Subcellular Location	Secreted
Predicted Molecular Mass	73.7kDa
Accurate Molecular Mass	74kDa(Analysis of differences refer to the manual)
Residues & Tags	Gln26~Ala400 with N-terminal His and GST Tag
Buffer Formulation	PBS, pH7.4, containing 0.01% SKL, 5% Trehalose.
Traits	Freeze-dried powder
Purity	> 90%
Isoelectric Point	5.3
Applications	Positive Control; Immunogen; SDS-PAGE; WB.

SEQUENCE

```
QYERY SFRSFPDEL MPLESAYRHA
LDQYSGEHWAE SVGYLEVSL RLHRLLRDSE AFCHRNCSAA TPAPAPAGPA
SHAELRLFGS VLRRAQCLKR CKQGLPAFRQ SQPSRSVLAD FQREPYKFL
QFAYFKANDL PKAIAAAHTY LLKHPDDEM KRNMEYYKSL PGAEDHIKDL
ETKSYESLFV RAVRAYNGEN WRTSISDMEL ALPDFLKAFY ECLAAACEGSR
EIKDFKDFYL SIADHYVEVL ECKIRCEETL TPVIGGYPVE KFBATMYHYL
QFAYYKLNLDL KNAAPCAVSY LLFDQSDRVM QQNLVYYQYH RDKWGLSDEH
FQPRPEAVQF FNVTTLQKEL YDFAQEHLMD DDEGEVVEYV DDLLETEESA
```

USAGE

Reconstitute in 10mM PBS (pH7.4) to a concentration of 0.1-1.0 mg/mL. Do not vortex.

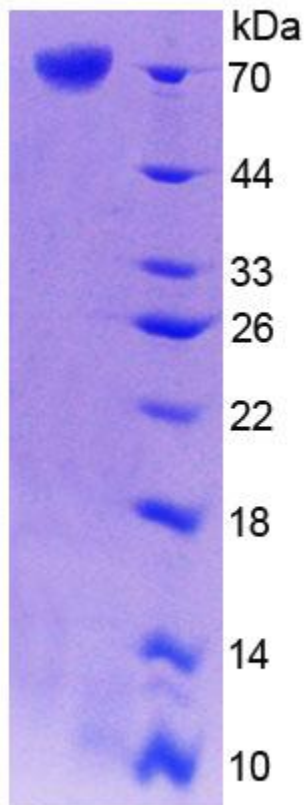
STORAGE

Avoid repeated freeze/thaw cycles. Store at 2-8°C for one month. Aliquot and store at -80°C for 12 months.

STABILITY

The thermal stability is described by the loss rate. The loss rate was determined by accelerated thermal degradation test, that is, incubate the protein at 37°C for 48h, and no obvious degradation and precipitation were observed. The loss rate is less than 5% within the expiration date under appropriate storage condition.

Image



15% SDS-PAGE

SDS-PAGE Image

[IMPORTANT NOTE]

The kit is designed for research use only, we will not be responsible for any issue if the kit was used in clinical diagnostic or any other procedures.