

Recombinant Regenerating Islet Derived Protein 3 Beta (REG3b) Instruction Manual

SIPK383Ra01

Rattus norvegicus (Rat)

Source	Prokaryotic expression
Host	E.coli
Endotoxin Level	<1.0EU per 1µg (determined by the LAL method)
Subcellular Location	Secreted
Predicted Molecular Mass	20.4kDa
Accurate Molecular Mass	18kDa(Analysis of differences refer to the manual)
Residues & Tags	Glu27~Gly175 with N-terminal His Tag
Buffer Formulation	100mMNaHCO ₃ , 500mMNaCl, pH8.3, containing 0.01% SKL, 5% Trehalose.
Traits	Freeze-dried powder
Purity	> 97%
Isoelectric Point	7.0
Applications	Positive Control; Immunogen; SDS-PAGE; WB.

SEQUENCE

```
EDSP KKIPSARISC PKGSQAYGSY  
CYALFQIPQT WFDAELACQK RPEGHLVSVL NVAEASFLAS MVKNTGNSYQ  
YTWIGLHDPT LGGEPNGGGW EWSNNDIMNY VNWERNPSTA LDRGFCGSLS  
RSSGFLRWRD TTCEVKLPYV CKFTG
```

USAGE

Reconstitute in ddH₂O to a concentration of 0.1-1.0 mg/mL. Do not vortex.

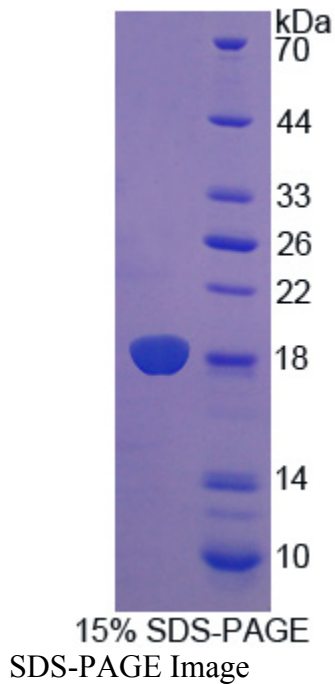
STORAGE

Avoid repeated freeze/thaw cycles. Store at 2-8°C for one month. Aliquot and store at -80°C for 12 months.

STABILITY

The thermal stability is described by the loss rate. The loss rate was determined by accelerated thermal degradation test, that is, incubate the protein at 37°C for 48h, and no obvious degradation and precipitation were observed. The loss rate is less than 5% within the expiration date under appropriate storage condition.

Image



[IMPORTANT NOTE]

The kit is designed for research use only, we will not be responsible for any issue if the kit was used in clinical diagnostic or any other procedures.