

# Recombinant Wingless Type MMTV Integration Site Family, Member 3 (WNT3) Instruction Manual

**SIPL186Bo01**

**Bos taurus; Bovine (Cattle)**

<b>Source</b>	Prokaryotic expression
<b>Host</b>	E.coli
<b>Endotoxin Level</b>	<1.0EU per 1µg (determined by the LAL method)
<b>Subcellular Location</b>	Secreted, Extracellular matrix
<b>Predicted Molecular Mass</b>	41.4kDa
<b>Accurate Molecular Mass</b>	41kDa(Analysis of differences refer to the manual)
<b>Residues &amp; Tags</b>	Val19~Lys355 with N-terminal His Tag
<b>Buffer Formulation</b>	20mM Tris, 150mM NaCl, pH8.0, containing 1mM EDTA, 1mM DTT, 0.01% SKL, 5% Trehalose and Proclin300.
<b>Traits</b>	Freeze-dried powder
<b>Purity</b>	> 90%
<b>Isoelectric Point</b>	7.5
<b>Applications</b>	Positive Control; Immunogen; SDS-PAGE; WB.

## SEQUENCE

```
VL AGYPIWWSLA LGQQYTSLSG QPLLCGSIPG
LVPKQLRFCR NYIEIMPSVA EGVKLG IQEC QHQFRGRRWN CTTIDDSLAI
FGPVLDKATR ESAFVHAIAS AGVAFVTRS CAEGTSTICG CDSHHKGPPG
EGWKWGGCSE DADFGVLVSR EFADARENRP DARSAMNKHN NEAGRRTILD
HMHLKCKCHG LSGSCEVKTC WWAQPDFRAI GDFLKD KYDS ASEMVVEKHR
ESRGWVETLR AKYALFKPPT ERDLVYYENS PNFCEPNPET GSFGRDRTC
NVTSHGIDGC DLLCCGRGHN TRTEKRKEKC HCIFHWCCYV SCQECIRIYD
VHTCK
```

## USAGE

Reconstitute in 20mM Tris, 150mM NaCl (pH8.0) to a concentration of 0.1-1.0 mg/mL.  
Do not vortex.



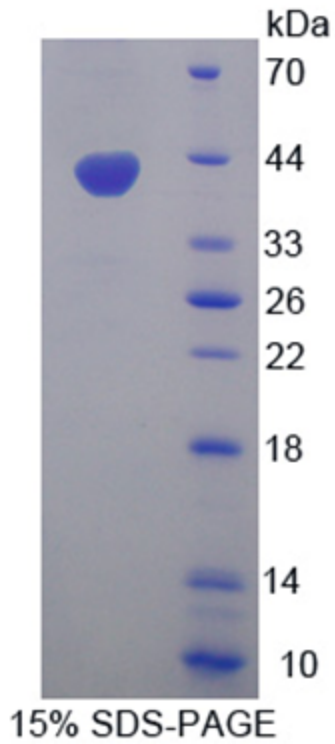


Figure. SDS-PAGE

**[IMPORTANT NOTE]**

The kit is designed for research use only, we will not be responsible for any issue if the kit was used in clinical diagnostic or any other procedures.