

Recombinant Endoplasmic Reticulum Lipid Raft Associated Protein 2 (ERLIN2) Instruction Manual

SIPL234Hu01

Homo sapiens (Human)

Source	Prokaryotic expression
Host	E.coli
Endotoxin Level	<1.0EU per 1µg (determined by the LAL method)
Subcellular Location	Endoplasmic reticulum lumen
Predicted Molecular Mass	36.9kDa
Accurate Molecular Mass	37kDa(Analysis of differences refer to the manual)
Residues & Tags	Pro47~Asn339 with N-terminal His Tag
Buffer Formulation	PBS, pH7.4, containing 0.01% SKL, 5% Trehalose.
Traits	Freeze-dried powder
Purity	> 90%
Isoelectric Point	5.3
Applications	Positive Control; Immunogen; SDS-PAGE; WB.

SEQUENCE

PGFH
LMLPFITSYK SVQTTLQTDE VKNVPCGTSG GVMIFYDRIE VVNFLVPSAV
YDIVKNYTAD YDKALIFNKI HHELNQFCSV HTLQEVYIEL FDQIDENLKL
ALQQDLTSM PGLVIQAVRV TKPNIPEAIR RNYELMESEK TKLLIAAQKQ
KVVEKEAETE RKKALIEAEK VAQVAEITYG QKVMKETEK KISEIEDAAF
LAREKAKADA ECYTAMKIAE ANKLKLTPEY LQLMKYKAIA SNSKIYFGKD
IPNMFMSAG SVSKQFEGLA DKLSFGLEDE PLETATKEN

USAGE

Reconstitute in 10mM PBS (pH7.4) to a concentration of 0.1-1.0 mg/mL. Do not vortex.

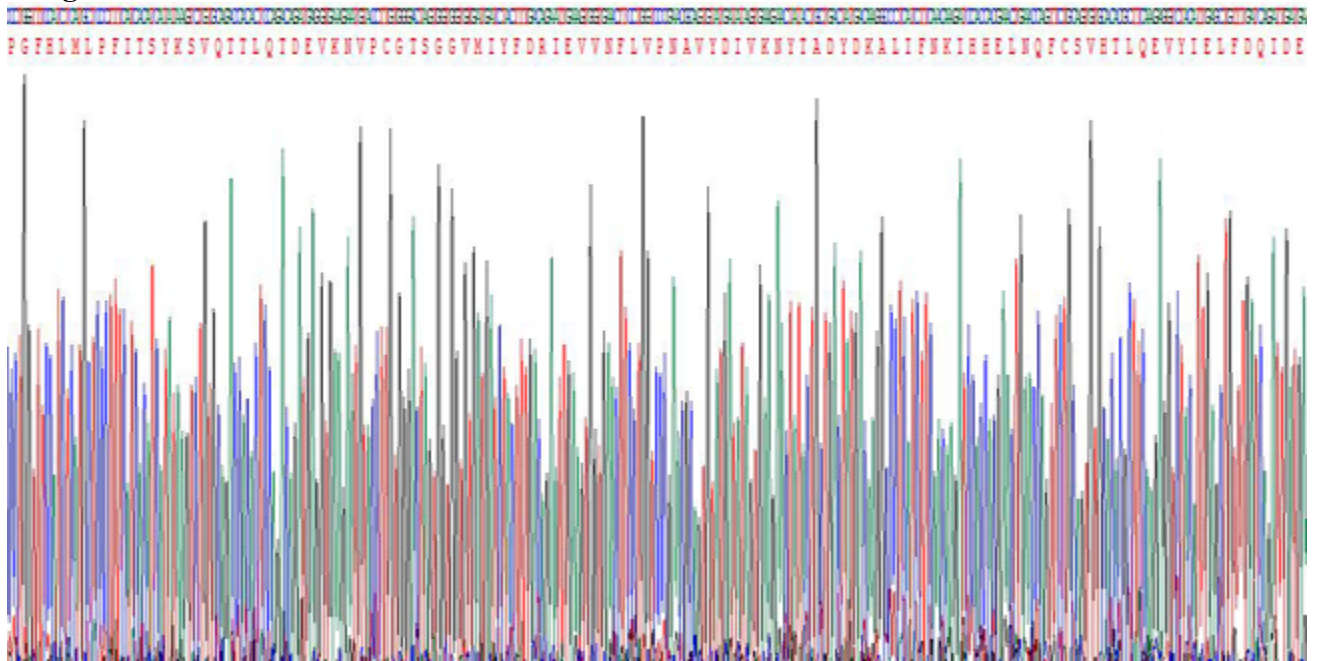
STORAGE

Avoid repeated freeze/thaw cycles. Store at 2-8°C for one month. Aliquot and store at -80°C for 12 months.

STABILITY

The thermal stability is described by the loss rate. The loss rate was determined by accelerated thermal degradation test, that is, incubate the protein at 37°C for 48h, and no obvious degradation and precipitation were observed. The loss rate is less than 5% within the expiration date under appropriate storage condition.

Image



SDS-PAGE Image

[IMPORTANT NOTE]

The kit is designed for research use only, we will not be responsible for any issue if the kit was used in clinical diagnostic or any other procedures.