

Recombinant Microtubule Associated Monooxygenase, Calponin And LIM Domain Containing Protein 2 (MICAL2) Instruction Manual

SIPL870Hu01

Homo sapiens (Human)

Source	Prokaryotic expression
Host	E.coli
Endotoxin Level	<1.0EU per 1µg (determined by the LAL method)
Subcellular Location	Nucleus
Predicted Molecular Mass	60.2
Accurate Molecular Mass	59kDa(Analysis of differences refer to the manual)
Residues & Tags	Met1~His495 with N-terminal His Tag
Buffer Formulation	20mM Tris, 150mM NaCl, pH8.0, containing 1mM EDTA, 1mM DTT, 0.01% SKL, 5% Trehalose and Proclin300.
Traits	Freeze-dried powder
Purity	> 95%
Isoelectric Point	6.5
Applications	Positive Control; Immunogen; SDS-PAGE; WB.

SEQUENCE

```
MGENEDEKQA QAGQVFENFV QASTCKGTLQ AFNILTRHLD LDPLDHRNFY  
SKLKSQVTTW KAKALWYKLD KRGSHKEYKR GKSCNTKCL IVGGGPCGLR  
TAIELAYLGA KVVVVEKRDS FSRNNVLHLW PFTIHDRGL GAKKFYGFYKFC  
AGSIDHISIR QLQLILFKVA LMLGVEIHVN VEFVKVLEPP EDQENQKIGW  
RAEFLPTDHS LSEFEFDVII GADGRRNTLE GFRRKEFRGK LAIAITANFI  
NRNSTAEAKV EEISGVAFIF NQKFFQDLKE ETGIDLENIV YYKDC THYFV  
MTAKKQSLLD KGVIIINDYID TEMLLCAENV NQDNLLSYAR EAADFATNYQ  
LPSLDFAMNH YGQPDVAMFD FTCMYASENA ALVRERQAHQ LLVALVGDSL  
LEPFWPMGTG CARGFLAAFD TAWMVKSWNQ GTPPLELLAE RESLYRLLPQ  
TTPENINKNF EQYTLDPGTR YPNLNSHCVR PHQVKHLYIT KELEH
```

USAGE

Reconstitute in 20mM Tris, 150mM NaCl (pH8.0) to a concentration of 0.1-1.0 mg/mL. Do not vortex.

STORAGE

Avoid repeated freeze/thaw cycles. Store at 2-8°C for one month. Aliquot and store at -80°C for 12 months.

STABILITY

The thermal stability is described by the loss rate. The loss rate was determined by accelerated thermal degradation test, that is, incubate the protein at 37°C for 48h, and no obvious degradation and precipitation were observed. The loss rate is less than 5% within the expiration date under appropriate storage condition.

Image

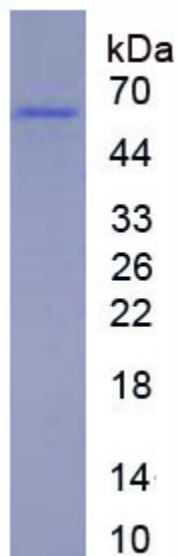


Figure. SDS-PAGE

[IMPORTANT NOTE]

The kit is designed for research use only, we will not be responsible for any issue if the kit was used in clinical diagnostic or any other procedures.