

# Recombinant Ribosomal Protein S6 Kinase Alpha 5 (RPS6Ka5) Instruction Manual

**SIPM060Hu01**

**Homo sapiens (Human)**

<b>Source</b>	Prokaryotic expression
<b>Host</b>	E.coli
<b>Endotoxin Level</b>	<1.0EU per 1µg (determined by the LAL method)
<b>Subcellular Location</b>	Nucleus, Cytoplasm
<b>Predicted Molecular Mass</b>	42.5kDa
<b>Accurate Molecular Mass</b>	44kDa(Analysis of differences refer to the manual)
<b>Residues &amp; Tags</b>	Glu2~Phe348 with N-terminal His Tag
<b>Buffer Formulation</b>	20mM Tris, 150mM NaCl, pH8.0, containing 1mM EDTA, 1mM DTT, 0.01% SKL, 5% Trehalose and Proclin300.
<b>Traits</b>	Freeze-dried powder
<b>Purity</b>	> 95%
<b>Isoelectric Point</b>	5.9
<b>Applications</b>	Positive Control; Immunogen; SDS-PAGE; WB.

## SEQUENCE

```
EEEGSSGG AAGTSADGGD GGEQLLTVKH ELRTANLTGH AEKVGIENFE  
LLKVLGTGAY GKVFLVRKIS GHDTGKLYAM KVLKKATIVQ KAKTTEHTRT  
ERQVLEHIRQ SPFLVTLHYA FQTETKLHLI LDYINGGELF THLSQRERFT  
EHEVQIYVGE IVLALEHLHK LGIIYRDIKL ENILLDSNGH VVLTDFGLSK  
EFVADETERA YSFCGTIEYM APDIVRGGDS GHDKAVDWWWS LGVLMYELLT  
GASPFTVDGE KNSQAEISRR ILKSEPPYPQ EMSALAKDLI QRLLMKDPKK  
RLGCGPRDAD EIKEHLFFQK INWDDLAAKK VPAPFKPVIR DELDVSNF
```

## USAGE

Reconstitute in 20mM Tris, 150mM NaCl (pH8.0) to a concentration of 0.1-1.0 mg/mL.  
Do not vortex.

## STORAGE

Avoid repeated freeze/thaw cycles. Store at 2-8°C for one month. Aliquot and store at -80°C for 12 months.

## STABILITY

The thermal stability is described by the loss rate. The loss rate was determined by accelerated thermal degradation test, that is, incubate the protein at 37°C for 48h, and no obvious degradation and precipitation were observed. The loss rate is less than 5% within the expiration date under appropriate storage condition.

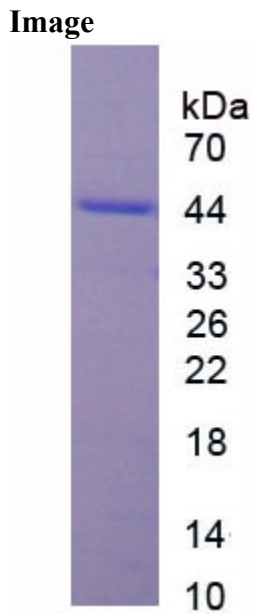


Figure. SDS-PAGE

### **[IMPORTANT NOTE]**

The kit is designed for research use only, we will not be responsible for any issue if the kit was used in clinical diagnostic or any other procedures.