

# Recombinant BRCA1/BRCA2 Containing Complex Subunit 3 (BRCC3) Instruction Manual

**SIPN116Hu01**

**Homo sapiens (Human)**

|                                 |  |
|---------------------------------|--|
| <b>Source</b>                   | Prokaryotic expression                             |
| <b>Host</b>                     | E.coli   |
| <b>Endotoxin Level</b>          | <1.0EU per 1µg (determined by the LAL method)      |
| <b>Subcellular Location</b>     | Nucleus  |
| <b>Predicted Molecular Mass</b> | 19.8kDa  |
| <b>Accurate Molecular Mass</b>  | 20kDa(Analysis of differences refer to the manual) |
| <b>Residues &amp; Tags</b>      | Gln7~Gly148 with N-terminal His Tag                |
| <b>Buffer Formulation</b>       | PBS, pH7.4, containing 0.01% SKL, 5% Trehalose.    |
| <b>Traits</b>                   | Freeze-dried powder                                |
| <b>Purity</b>                   | > 95%  |
| <b>Isoelectric Point</b>        | 5.9  |
| <b>Applications</b>             | Positive Control; Immunogen; SDS-PAGE; WB.         |

## SEQUENCE

QAVQ AVHLESDAFL VCLNHALSTE KEEVMGLCIG ELNDDTRS DS KFAYTGTEMR  
TVAEKVDAVR IVHIHSV IIL RRS DKRKDRV EISPEQLSAA STEAERLAEL TGRPMRVV GW  
YHSHPHITVW PSHVDVRTQA MYQMMDQG

## USAGE

Reconstitute in 10mM PBS (pH7.4) to a concentration of 0.1-1.0 mg/mL. Do not vortex.

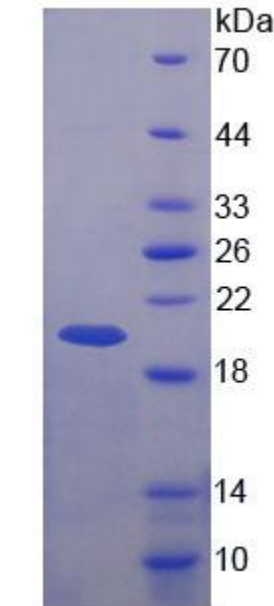
## STORAGE

Avoid repeated freeze/thaw cycles. Store at 2-8°C for one month. Aliquot and store at -80°C for 12 months.

## STABILITY

The thermal stability is described by the loss rate. The loss rate was determined by accelerated thermal degradation test, that is, incubate the protein at 37°C for 48h, and no obvious degradation and precipitation were observed. The loss rate is less than 5% within the expiration date under appropriate storage condition.

## Image



15% SDS-PAGE

SDS-PAGE Image

## **[IMPORTANT NOTE]**

The kit is designed for research use only, we will not be responsible for any issue if the kit was used in clinical diagnostic or any other procedures.