

Recombinant Poly ADP Ribose Glycohydrolase (PARG) Instruction Manual

SIPP554Hu02

Homo sapiens (Human)

Source	Prokaryotic expression
Host	E.coli
Endotoxin Level	<1.0EU per 1 μ g (determined by the LAL method)
Subcellular Location	Secreted
Predicted Molecular Mass	114.8kDa
Accurate Molecular Mass	115kDa(Analysis of differences refer to the manual)
Residues & Tags	Met1~Thr976 with N-terminal His Tag
Buffer Formulation	PBS, pH7.4, containing 0.01% SKL, 5% Trehalose.
Traits	Freeze-dried powder
Purity	> 97%
Isoelectric Point	6.4
Applications	Positive Control; Immunogen; SDS-PAGE; WB.

SEQUENCE

MNAGPGCEPC TKRPRWGAAT TSPAASDARS FPSRQRRVLD PKDAHVQFRV
PPSSPACVPG RAGQHRGSAT SLVFKQKTIT SWMDTKGIKT AESESLDSKE
NNNTRIESMM SSVQKDNFYQ HNVEKLENVS QLSLDKSPTE KSTQYLNQHQ
TAAMCKWQNE GKHTEQLLES EPQTVTLVPE QFSNANIDRS PQNDHSDTD
SEENRDNQQF LTTVKLANAK QTTEDEQARE AKSHQKCSKS CDPGEDCASC
QQDEIDVVPE SPLSDVGSSE VGTGPKNDNK LTRQESCLGN SPPFEKESEP
ESPMDVDNSK NSCQDSEADE ETSPGFDEQE DGSSSQTANK PSRFQARDAD
IEFRKRYSTK GGEVRLHFQF EGGESRTGMN DLNAKLPGNI SSLNVECRNS
KQHGGKDSKI TDHFMRPKA EDRRKEQWET KHQRTERKIP KYVPPHLSPD
KKWLGTPIEE MRRMPRCGIR LPLLRSANH TVTIRVDLLR AGEVPKPFPT
HYKDLWDNKH VKMPCSEQNL YPVEDENGER TAGSRWELIQ TALLNKFTRP
QNLKDAILKY NVAYSKKWDF TALIDFWDKV LEEAEAQHLV QSILPDMVKI
ALCLPNICTQ PIPLLKQKMN HSITMSQEQI ASLLANAFFC TFPRRNAKMK
SEYSSYPDIN FNRLFEGRSS RKPEKLTFLF CYFRRVTEKK PTGLVTFTRQ
SLEDFPEWER CEKPLTRLHV TYEGTIEENG QGMLQVDFAN RFVGGGV TSA
GLVQEEIRFL INPELIISRL FTEVLDHNEC LIITGTEQYS EYTGYAETVR
WSRSHEDGSE RDDWQRRCTE IVAIDALHFR RYLDQFVPEK MRRELNKAYC
GFLRPGVSSE NLSAVATGNW GCGAFGGDAR LKALIQILAA AAAERDVVYF
TFGDESELMRD IYSMHIFLTE RKLTVGDVYK LLLRYNNEEC RNCSTPGPDI
KLYPFIYHAV ESCAETADHS GQRTGT

USAGE

Reconstitute in ddH₂O to a concentration of 0.1-0.5 mg/mL. Do not vortex.

STORAGE

Avoid repeated freeze/thaw cycles. Store at 2-8°C for one month. Aliquot and store at -80°C for 12 months.

STABILITY

The thermal stability is described by the loss rate. The loss rate was determined by accelerated thermal degradation test, that is, incubate the protein at 37°C for 48h, and no obvious degradation and precipitation were observed. The loss rate is less than 5% within the expiration date under appropriate storage condition.

Image

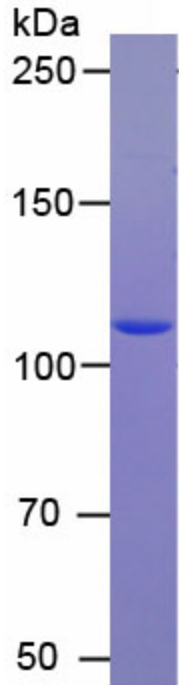


Figure. SDS-PAGE

[IMPORTANT NOTE]

The kit is designed for research use only, we will not be responsible for any issue if the kit was used in clinical diagnostic or any other procedures.