

Recombinant Enah/Vasp Like Protein (EVL) Instruction Manual

SIPQ188Mu01

Mus musculus (Mouse)

Source	Prokaryotic expression
Host	E.coli
Endotoxin Level	<1.0EU per 1µg (determined by the LAL method)
Subcellular Location	Cytoplasm
Predicted Molecular Mass	74.3kDa
Accurate Molecular Mass	79kDa(Analysis of differences refer to the manual)
Residues & Tags	Met1~Thr414 with N-terminal His and GST Tag
Buffer Formulation	PBS, pH7.4, containing 0.01% SKL, 5% Trehalose.
Traits	Freeze-dried powder
Purity	> 90%
Isoelectric Point	8.9
Applications	Positive Control; Immunogen; SDS-PAGE; WB.

SEQUENCE

```
MSEQSICQAR ASVMVYDDTS KKWVPIKPGQ QGFSRINIYH NTASSTFRV V GVKLQDQQV INYSIVKGLK YNQATPTFHQ  
WRDARQVYGL NFASKEEATT FSNAMLFALN IMNSQEGGPS TQRQVQNGPS PEEMDIQRRQ VMEQQHRQES LERRISATGP  
ILPPGHPSSA ASTTLSCSGP PPPPPPVPP PPTGSTPPPP PPLPAGGAQG TNHDESSASG LAAALAGAKL RRVQRPEDAS  
GGSSPSGTSK SDANRASSGG GGGGLMEEMN KLLAKRRKAA SQTDKPADRK EDESQTEDPS TSPSPGTRAT SQPPNSSEAG  
RKPWERSNSV EKPVSSLLSR TPSVAKSPEA KSPLQSQPHS RVKPAGEVND VGLDALDLDR MKQEILEEVV RELHKVKEEI  
IDAIRQELSG ISTT
```

USAGE

Reconstitute in ddH₂O to a concentration of 0.1-1.0 mg/mL. Do not vortex.

STORAGE

Avoid repeated freeze/thaw cycles. Store at 2-8°C for one month. Aliquot and store at -80°C for 12 months.

STABILITY

The thermal stability is described by the loss rate. The loss rate was determined by accelerated thermal degradation test, that is, incubate the protein at 37°C for 48h, and no obvious degradation and precipitation were observed. The loss rate is less than 5% within the expiration date under appropriate storage condition.

Image

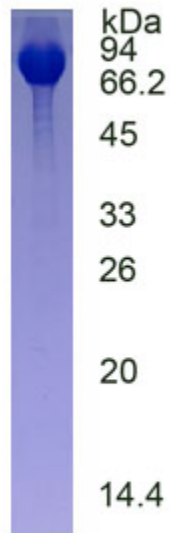


Figure. SDS-PAGE

[IMPORTANT NOTE]

The kit is designed for research use only, we will not be responsible for any issue if the kit was used in clinical diagnostic or any other procedures.

