

# Recombinant Proteasome 26S Subunit, Non ATPase 6 (PSMD6) Instruction Manual

## SIPQ949Hu01

**Homo sapiens (Human)**

<b>Source</b>	Prokaryotic expression
<b>Host</b>	E.coli
<b>Endotoxin Level</b>	<1.0EU per 1µg (determined by the LAL method)
<b>Subcellular Location</b>	n/a
<b>Predicted Molecular Mass</b>	75.5kDa
<b>Accurate Molecular Mass</b>	76kDa(Analysis of differences refer to the manual)
<b>Residues &amp; Tags</b>	Met1~Met389 with N-terminal His and GST Tag
<b>Buffer Formulation</b>	100mMNaHCO <sub>3</sub> , 500mMNaCl, pH8.3, containing 1mM EDTA, 1mM DTT, 0.01% SKL, 5% Trehalose and Proclin300.
<b>Traits</b>	Freeze-dried powder
<b>Purity</b>	> 97%
<b>Isoelectric Point</b>	5.5
<b>Applications</b>	Positive Control; Immunogen; SDS-PAGE; WB.

## SEQUENCE

```
MPLENLEEEG LPKNPDLRIA QLRFLLSLPE HRGDAAVRDE LMAAVRDNNM
APYYEALCKS LDWQIDVDLL NKMKKANEDE LKRLDEELED AEKNLGESEI
RDAMMAKAEY LCRIGDKEGA LTAFRKTYDK TVALGHRLDI VFYLLRIGLF
YMDNDLITRN TEKAKSLIEE GGDWDRRNRL KVYQGLYCVA IRDFKQAAEL
FLDTVSTFTS YELMDYKTFV TYTVVYSMIA LERPDIREKV IKGAEILEVL
HSLPAVRQYL FSLYECRYSV FFQSLAVVEQ EMKKDWLFAP HYRYVREMR
IHAYSQLES YRSLTLGYMA EAFGVGVEFI DQELSRFIAA GRLHCKIDKV
NEIVETNRPD SKNWQYQETI KKGDLLLN RV QKLSRVINM
```

## USAGE

Reconstitute in 100mM NaHCO<sub>3</sub>, 500mM NaCl (pH8.3) to a concentration of 0.1-1.0 mg/mL. Do not vortex.

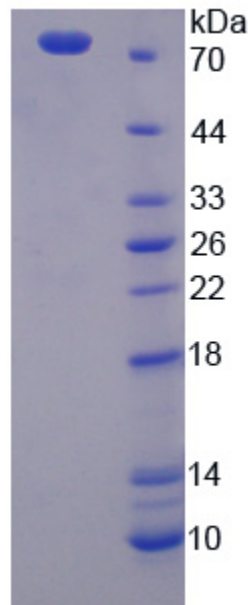
## STORAGE

Avoid repeated freeze/thaw cycles. Store at 2-8°C for one month. Aliquot and store at -80°C for 12 months.

## STABILITY

The thermal stability is described by the loss rate. The loss rate was determined by accelerated thermal degradation test, that is, incubate the protein at 37°C for 48h, and no obvious degradation and precipitation were observed. The loss rate is less than 5% within the expiration date under appropriate storage condition.

## Image



15% SDS-PAGE

SDS-PAGE Image

## **[IMPORTANT NOTE]**

The kit is designed for research use only, we will not be responsible for any issue if the kit was used in clinical diagnostic or any other procedures.

