

Recombinant Complement Component 4d (C4d) Instruction Manual

SIPS495Ra01

Rattus norvegicus (Rat)

Source	Prokaryotic expression
Host	E.coli
Endotoxin Level	<1.0EU per 1µg (determined by the LAL method)
Subcellular Location	Secreted
Predicted Molecular Mass	44.6kDa
Accurate Molecular Mass	47kDa(Analysis of differences refer to the manual)
Residues & Tags	Ser952~Arg1331 with N-terminal His Tag
Buffer Formulation	PBS, pH7.4, containing 0.01% SKL, 5% Trehalose.
Traits	Freeze-dried powder
Purity	> 90%
Isoelectric Point	5.4
Applications	Positive Control; Immunogen; SDS-PAGE; WB.

SEQUENCE

```
SLEIPGSSD PNVIPDGDFFS SFVRVTASEP LETLGSEGAL SPGGVASLLR  
LPRGCAEQTM IYLAPTLTAS HYLDRTQWS KLPPETKDHA VDLIQKGHMR  
IQQFRKKDGS FGAWLHRDSS TWLTAFLVKI LSLAQEQIGD SPEKLQETAG  
WLLGQQQLDDG SFHDPCPVIIH RGMQGGGLVGT DETVALTAFV VIALHHGLAV  
FQDENSQQLK KRVEASITKA NSFLGQKASA GLLGAHASAI TAYALTLTKA  
SEDLQNVAHN SLMAMAEETG ENLYWGS AIG SQDNVVSSTP APRNPSEPVP  
QAPALWIETT AYGLLHLLLR EGKGEMADKV ATWLTHQGSF QGGFRSTQDT  
VVTLDALSAY WIASHTTEEK ALNVTLSMGR
```

USAGE

Reconstitute in 10mM PBS (pH7.4) to a concentration of 0.1-1.0 mg/mL. Do not vortex.

STORAGE

Avoid repeated freeze/thaw cycles. Store at 2-8°C for one month. Aliquot and store at -80°C for 12 months.

STABILITY

The thermal stability is described by the loss rate. The loss rate was determined by accelerated thermal degradation test, that is, incubate the protein at 37°C for 48h, and no obvious degradation and precipitation were observed. The loss rate is less than 5% within the expiration date under appropriate storage condition.

Image

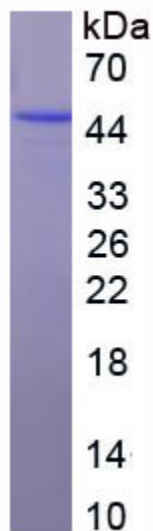


Figure. SDS-PAGE

[IMPORTANT NOTE]

The kit is designed for research use only, we will not be responsible for any issue if the kit was used in clinical diagnostic or any other procedures.